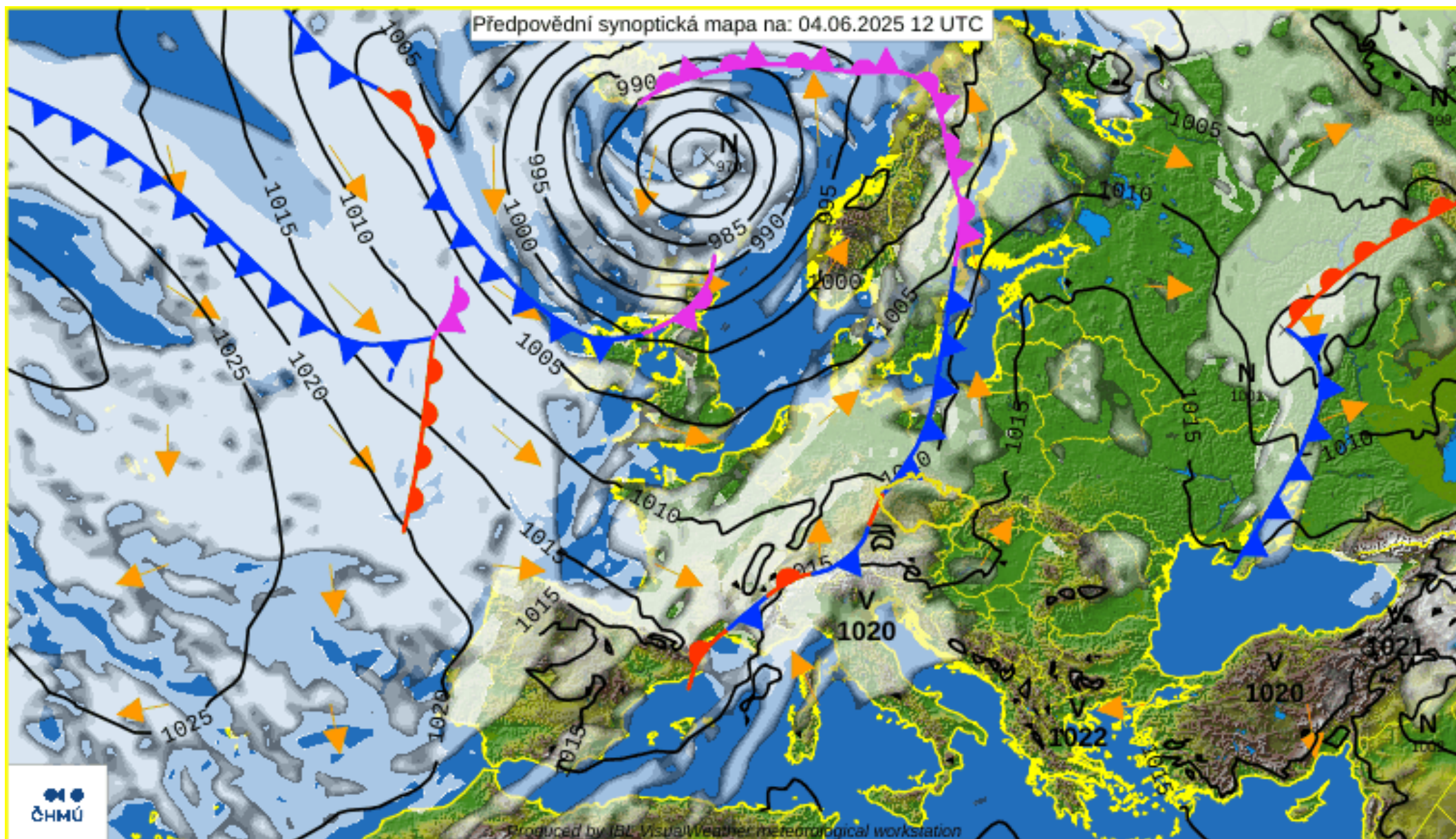


39th FAI
WORLD GLIDING
CHAMPIONSHIPS
TÁBOR I 2025

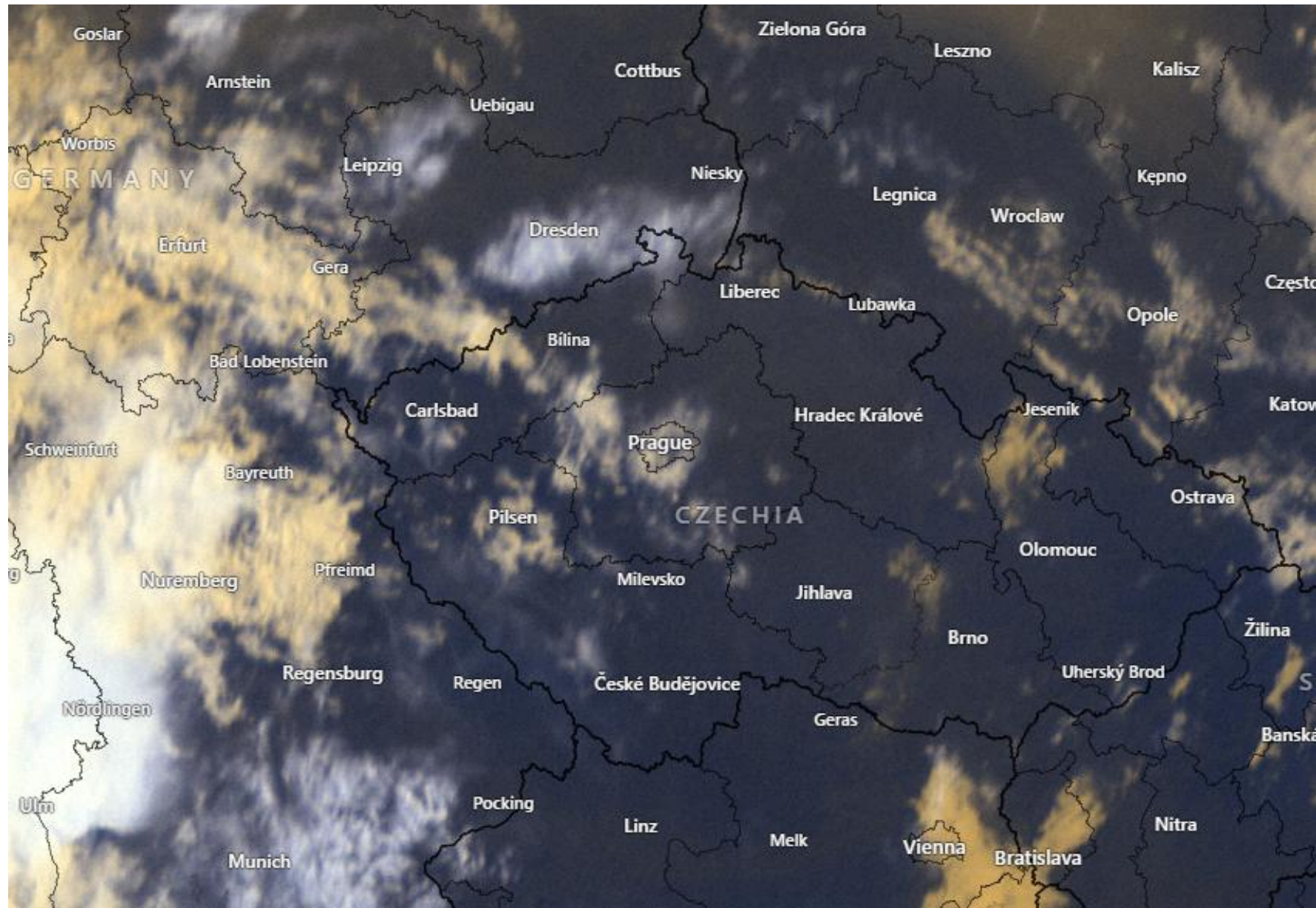
DAILY BRIEFING

OFFICIAL TRAINING DAY 1 – 04/06/2025

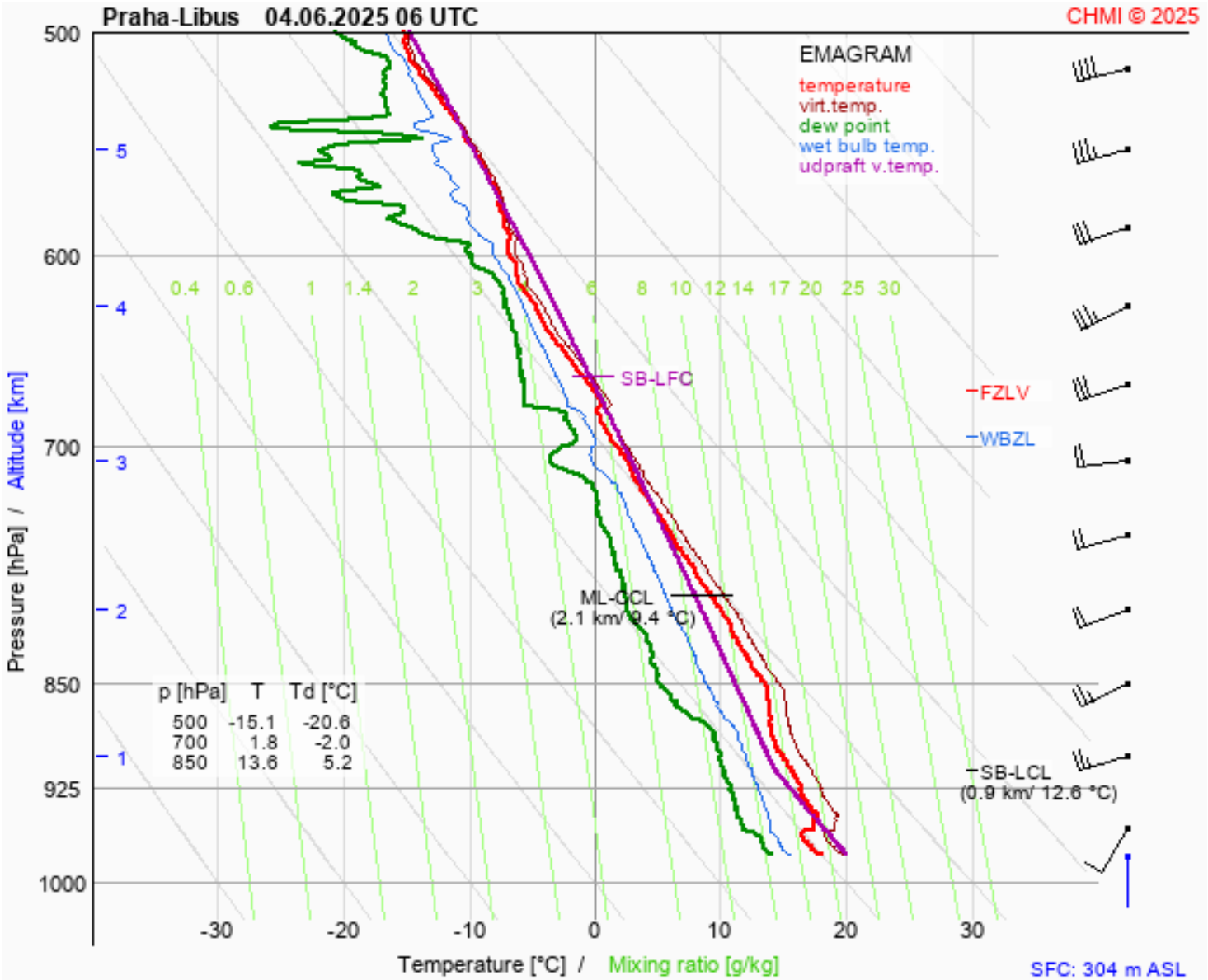
WEATHER



WEATHER



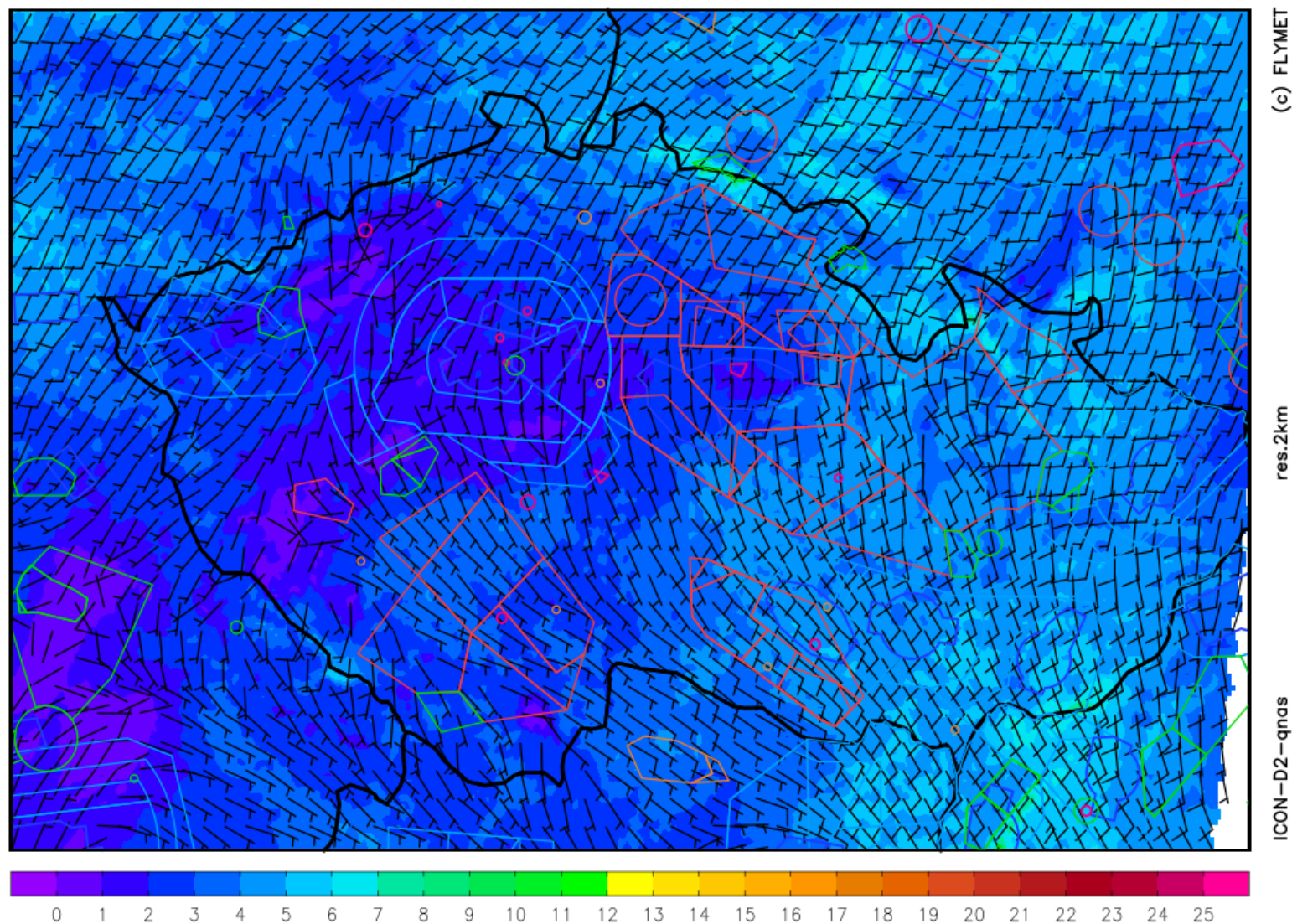
WEATHER



WEATHER

vítr v 10m [m/s]

středa 04.06. 2025 10:00 utc



(c) FLYMET

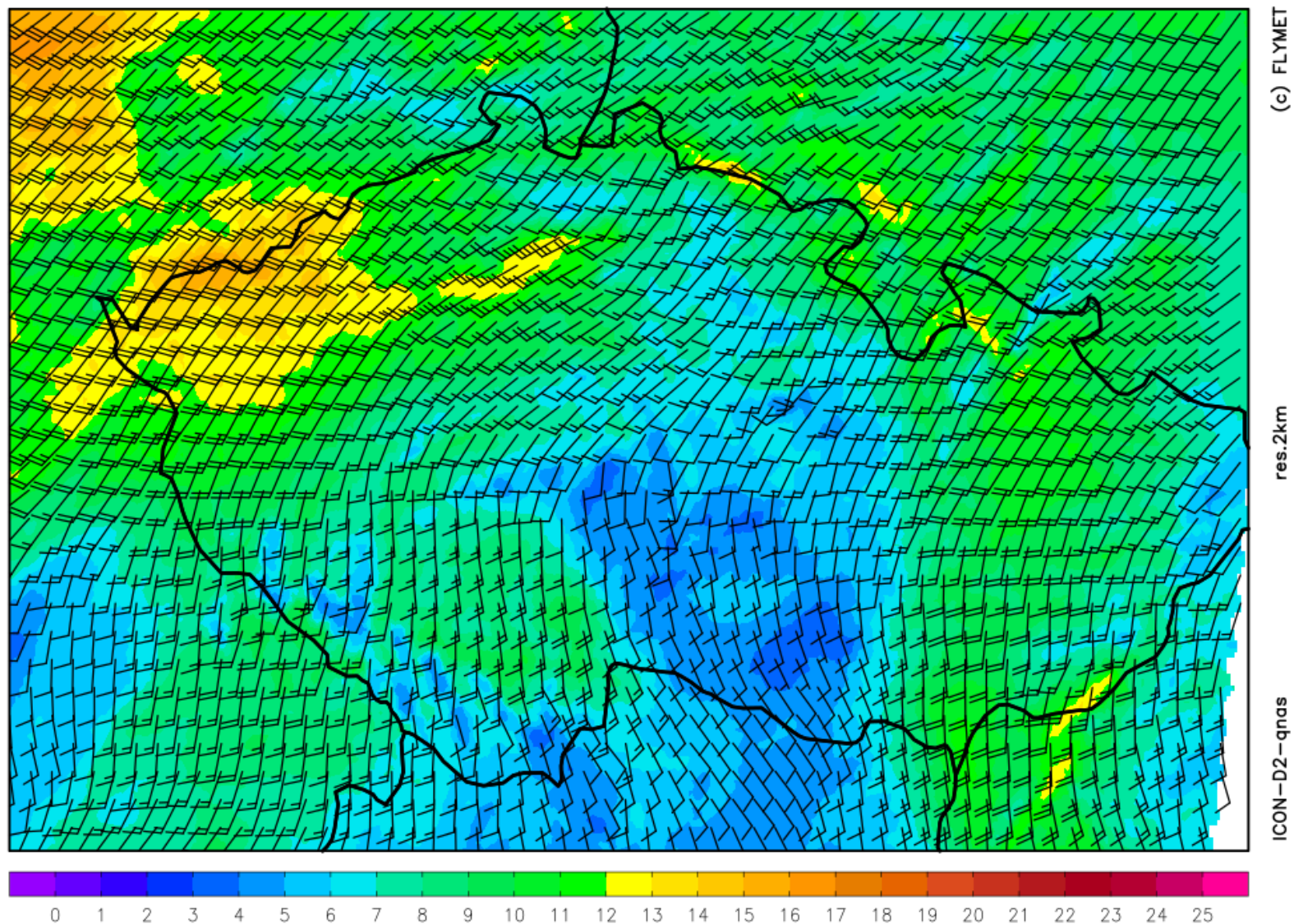
res. 2km

ICON-D2-qnas

WEATHER

vítr 1500 m [m/s]

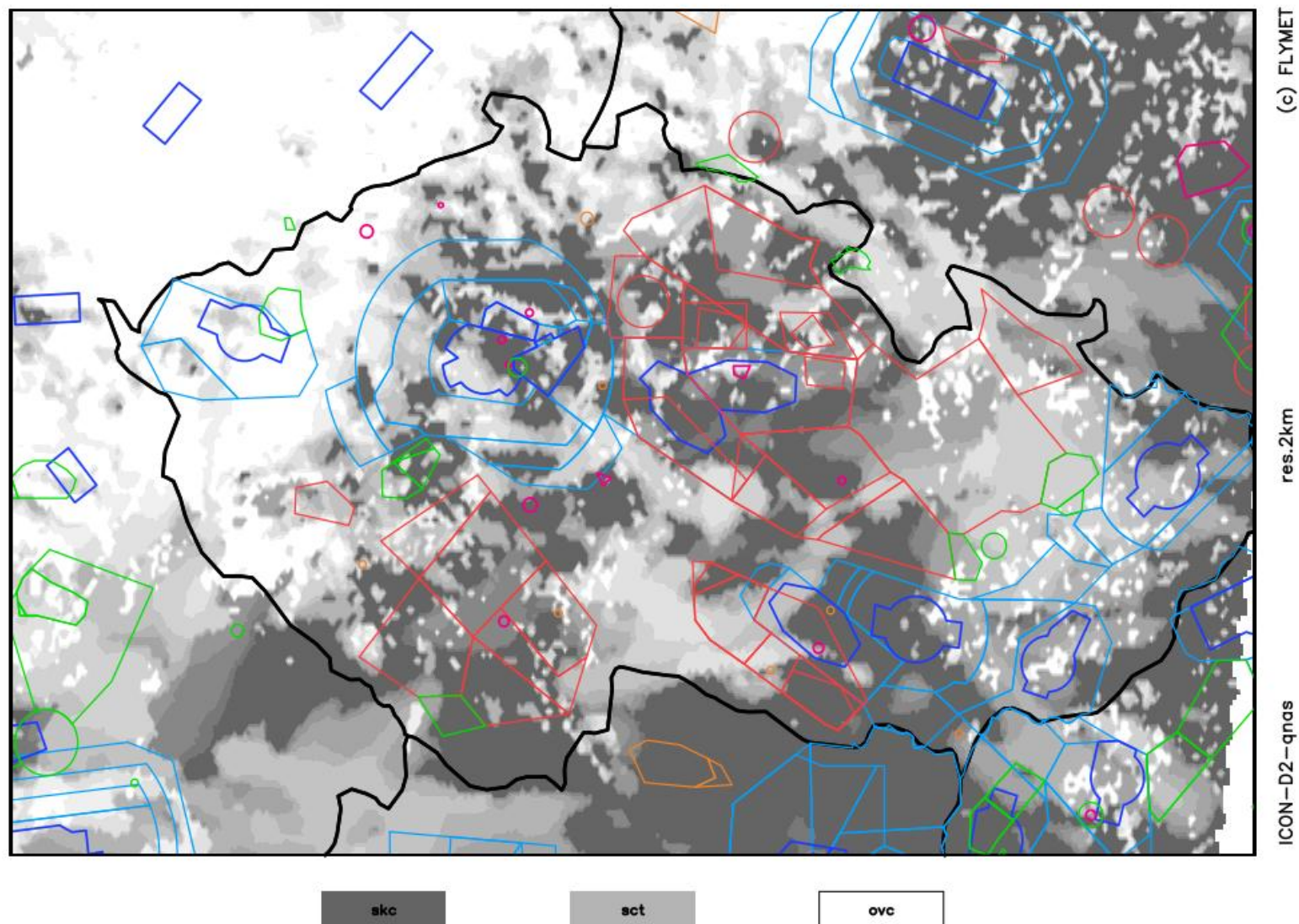
středa 04.06. 2025 10:00 utc



WEATHER

oblačnost

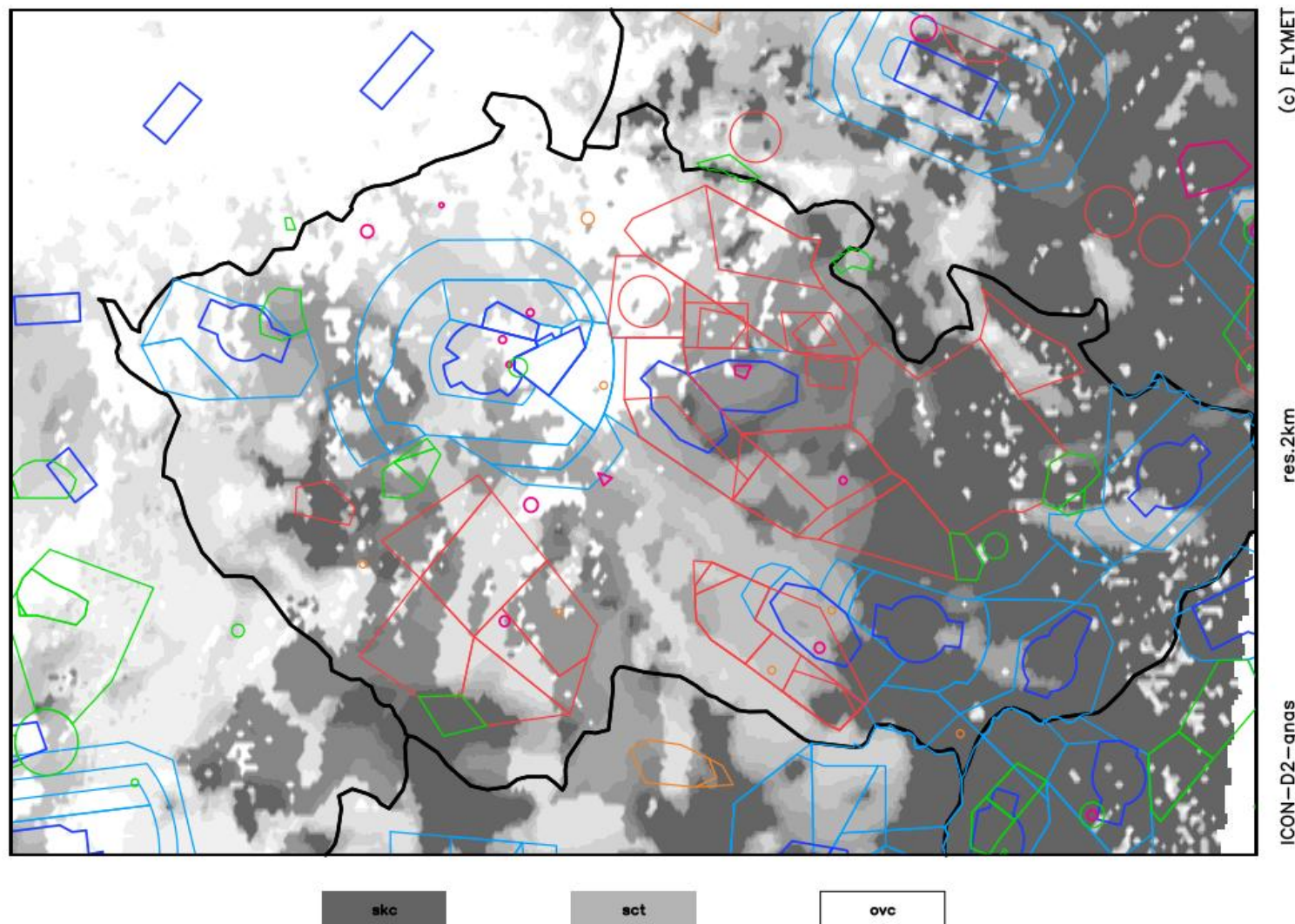
středa 04.06. 2025 12:00 utc



WEATHER

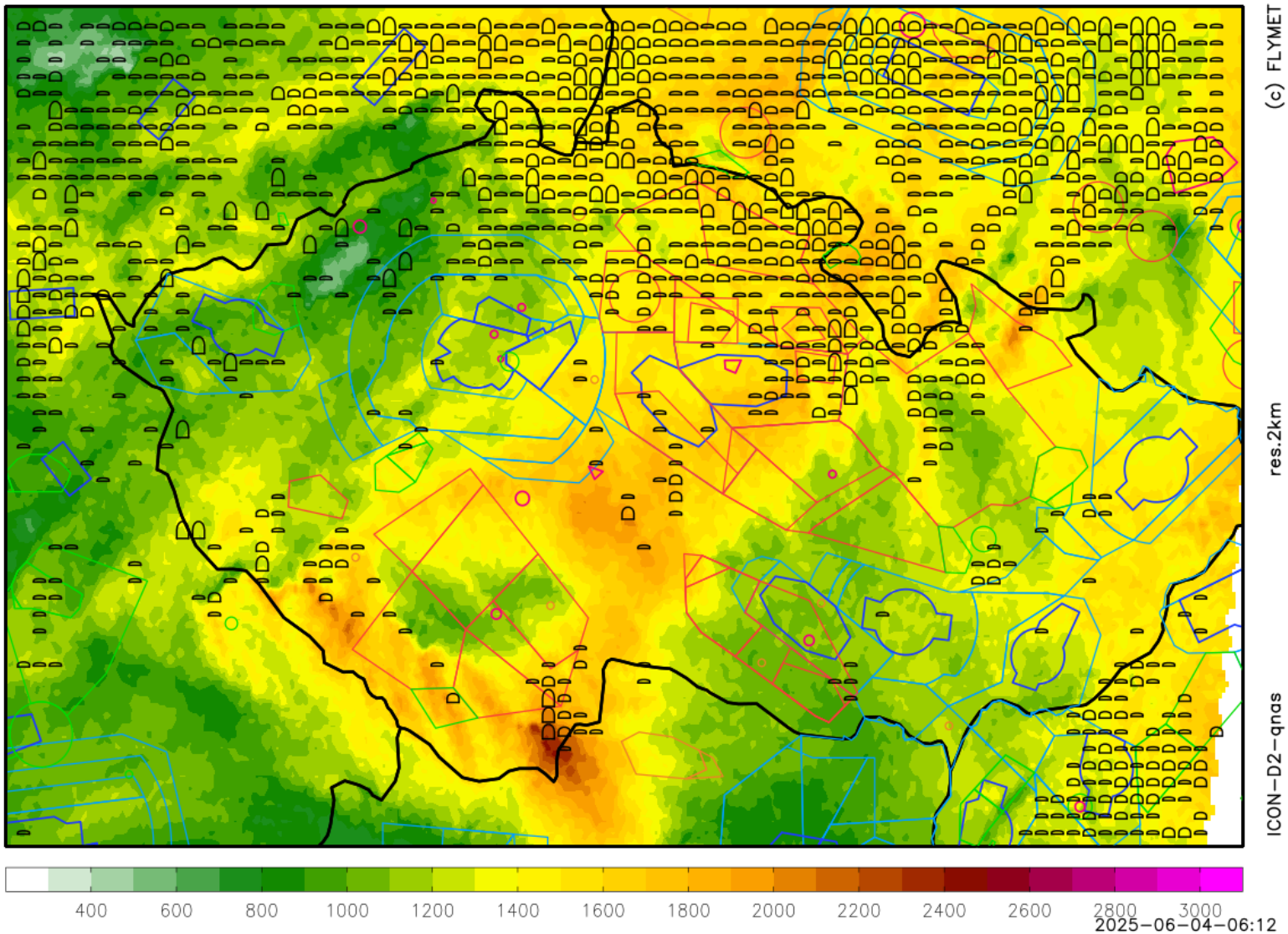
oblačnost

středa 04.06. 2025 15:00 utc



WEATHER

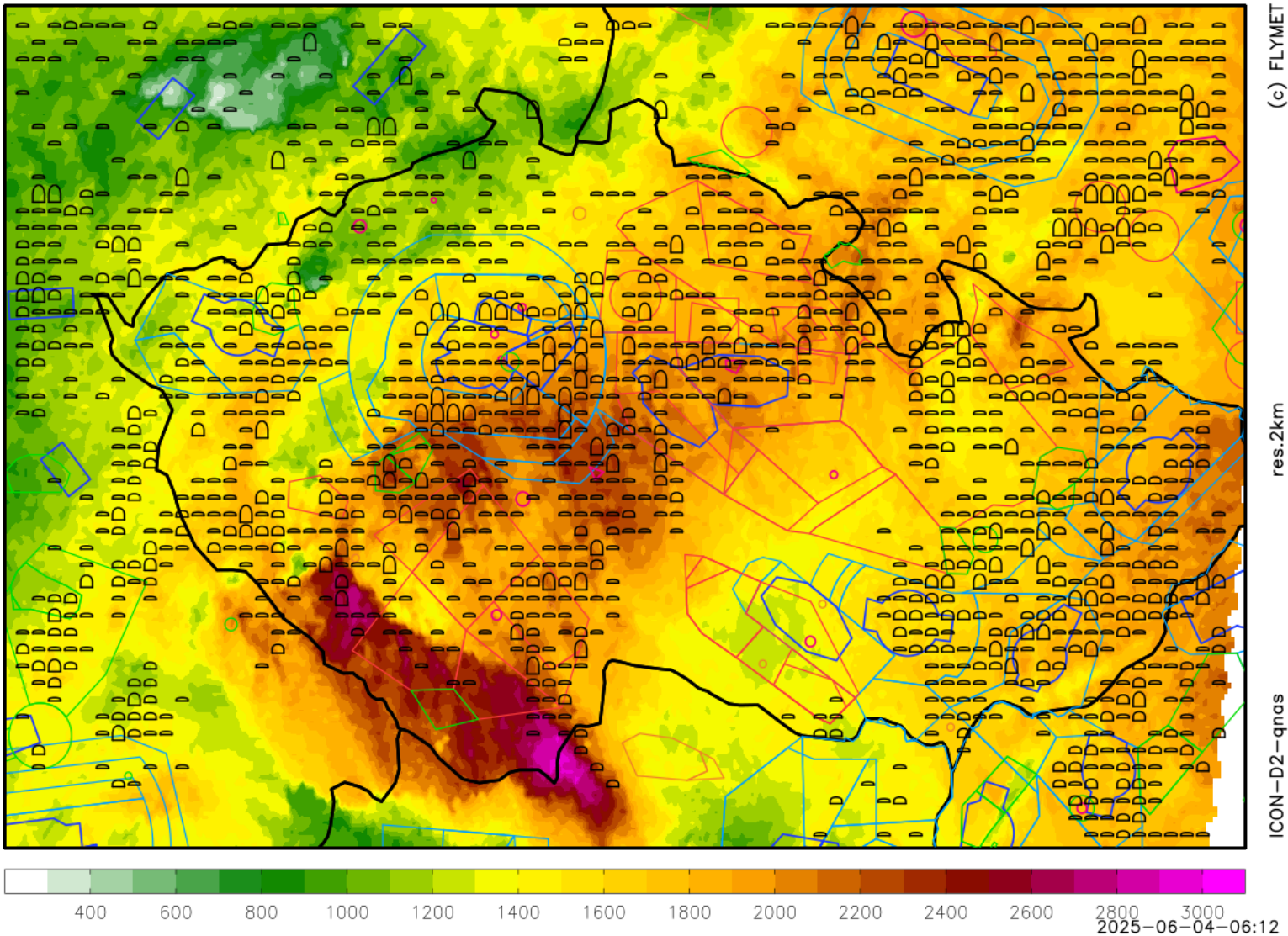
termika čistá + kumuly středa 04.06.2025 10:00utc



WEATHER

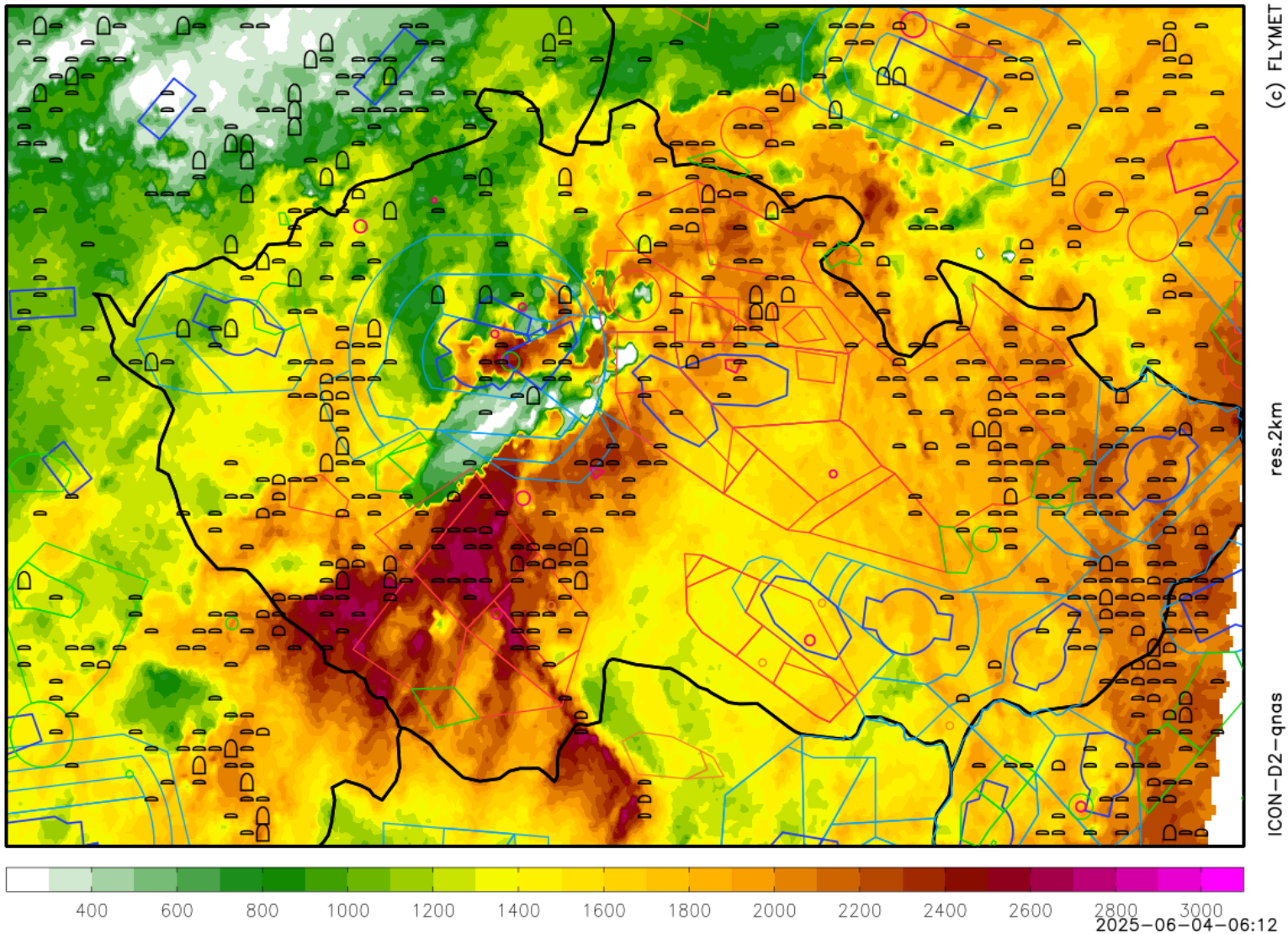
termika čistá + kumuly

středa 04.06.2025 12:00utc

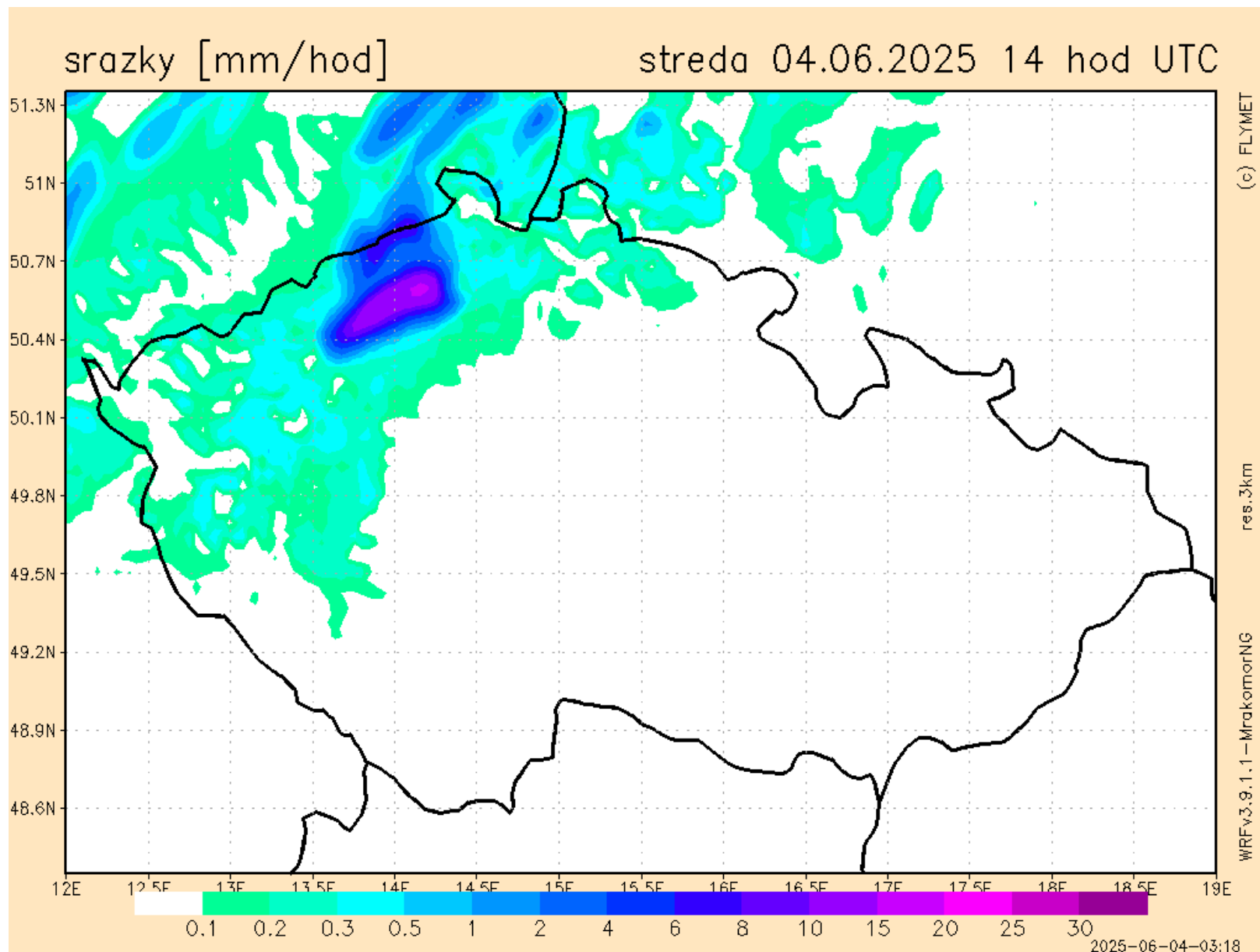


WEATHER

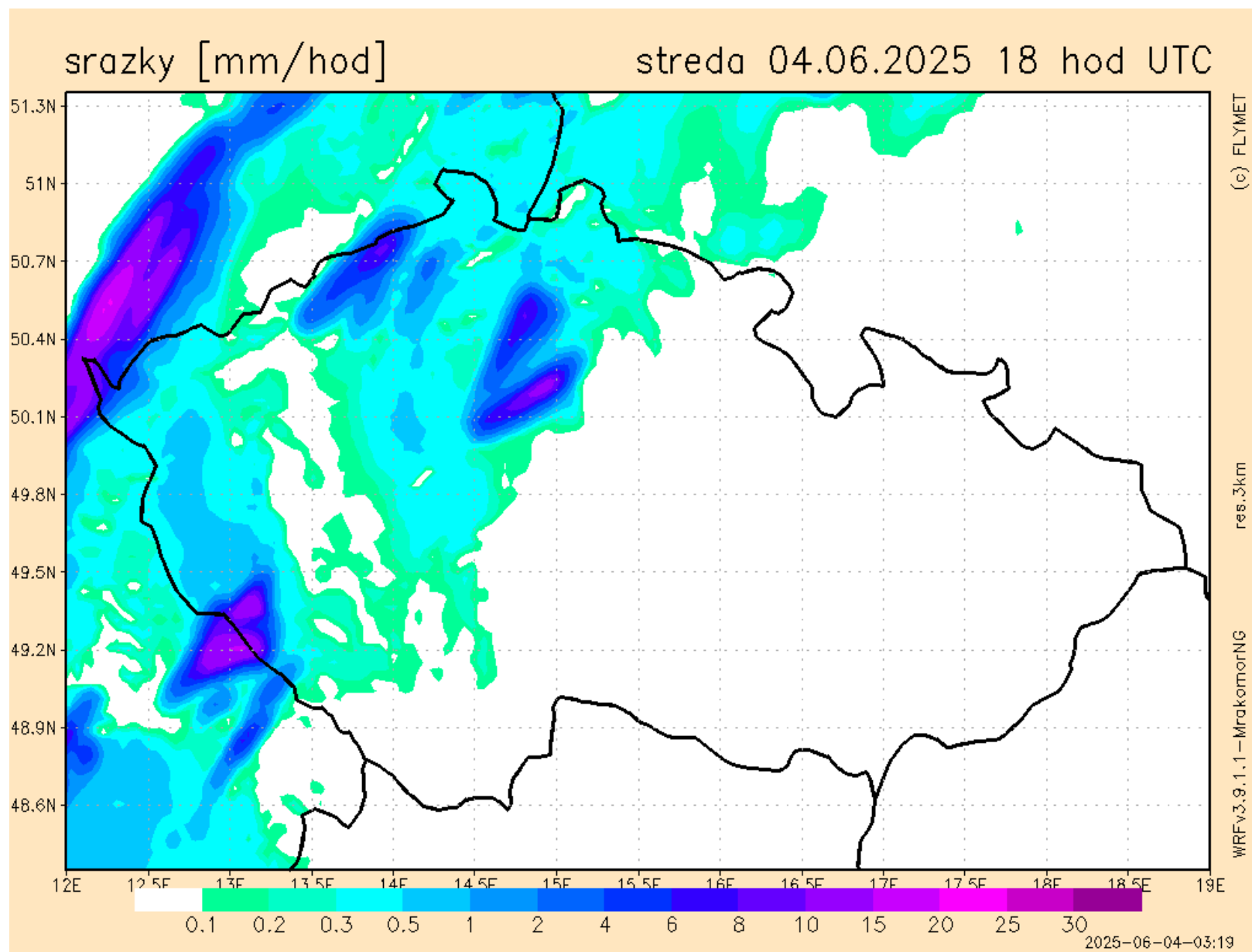
termika čistá + kumuly středa 04.06.2025 15:00utc



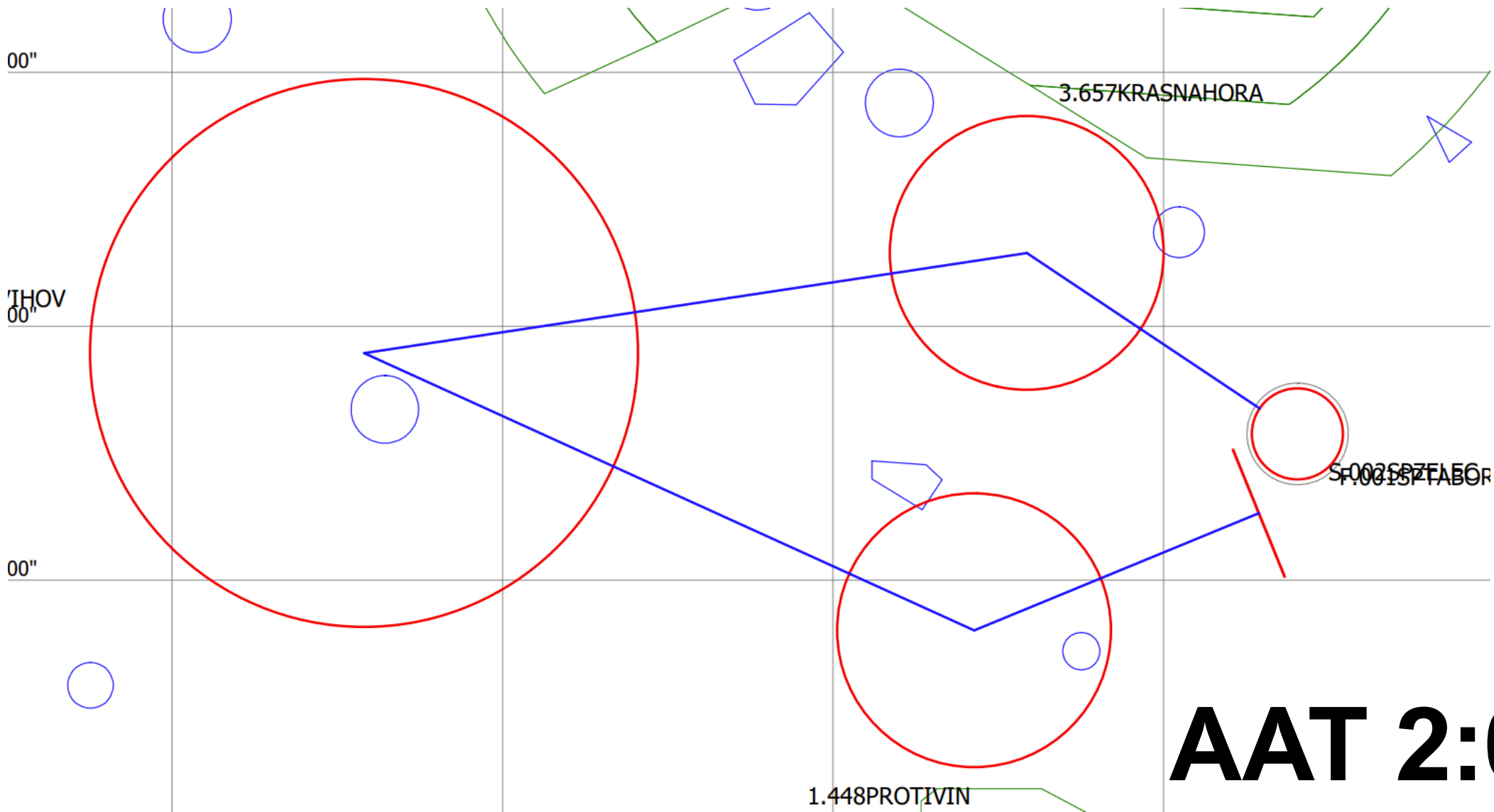
WEATHER



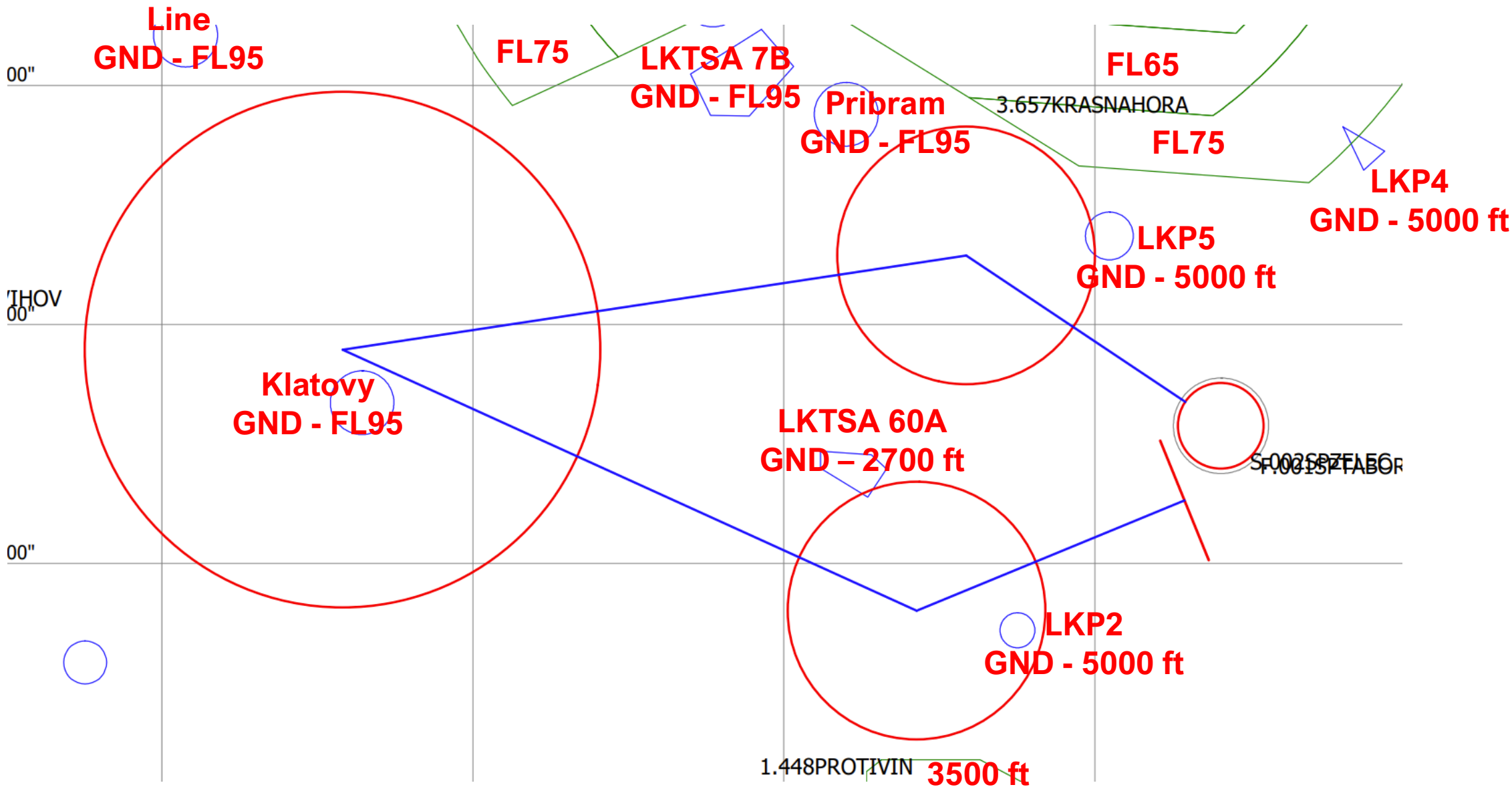
WEATHER



TASK FOR ALL CLASSES

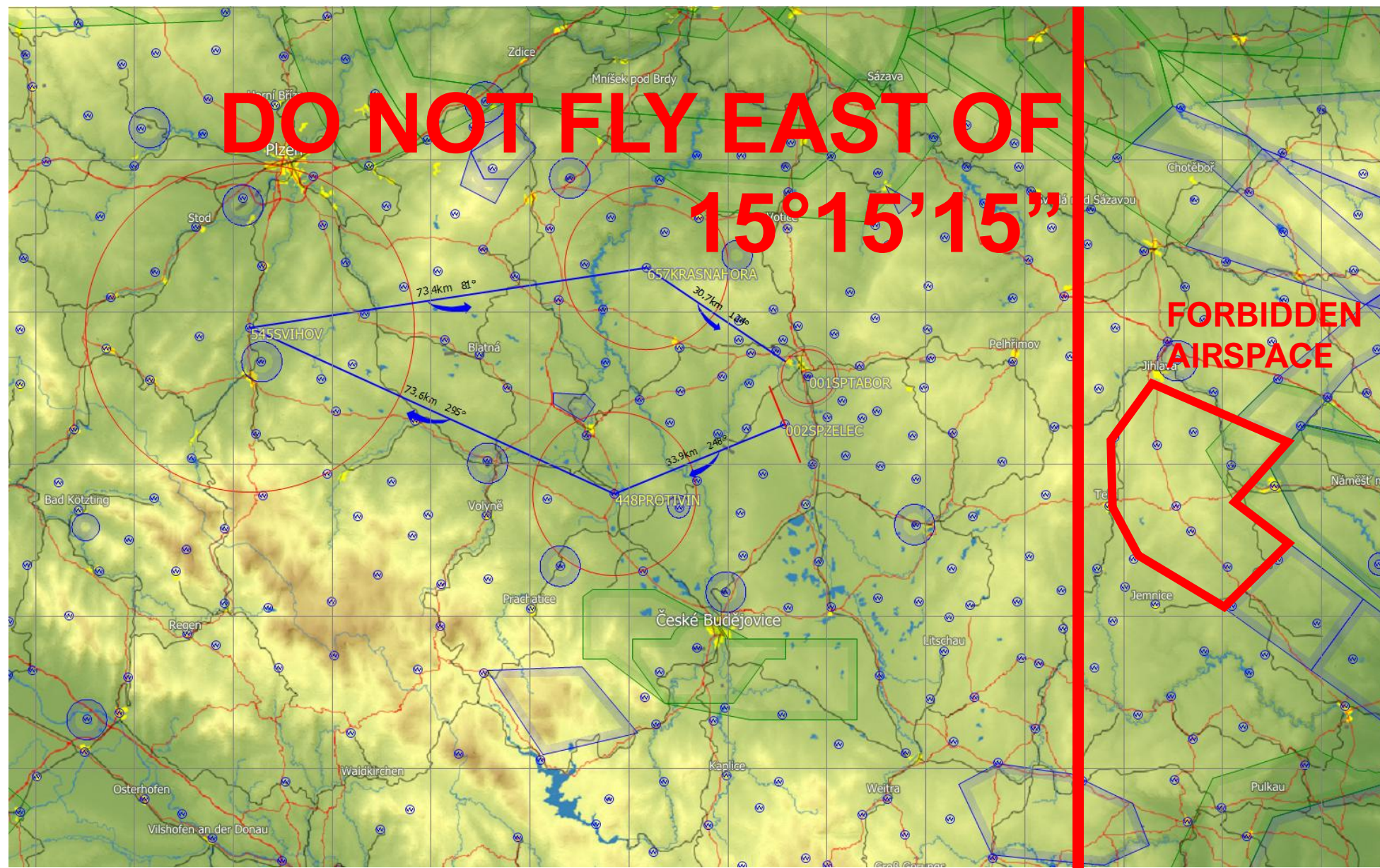


AIRSPACE



AIRSPACE

39th FAI WGC
TÁBOR I 2025



CONTEST SITE BOUNDARY



GRID ORDER RWY 11

39th FAI WGC
TÁBOR I 2025



**ORDER OF CLASSES MAY CHANGE
ROW NUMBERS WILL BE KEPT CONSTANT**

**15M CLASS
ROWS 18-24**

**STANDARD CLASS
ROWS 10-17**

**CLUB CLASS
ROWS 1-9**

**IF A COMPETITOR IS
ASSIGNED ROW 1,
THEY WILL REMAIN IN
ROW 1 FOR THE
ENTIRE
CHAMPIONSHIPS BUT
LOCATION OF THE
ROW WILL CHANGE
EACH DAY**



GRID RWY 11

**FOLLOW MARKING ON GROUND
COME FROM THE NORTH SIDE
BUILD ROWS FROM SOUTH TO NORTH**

CARS



TAKE-OFF RWY 11

**DO NOT CROSS
RUNWAY
WITHOUT
PERMISSION**

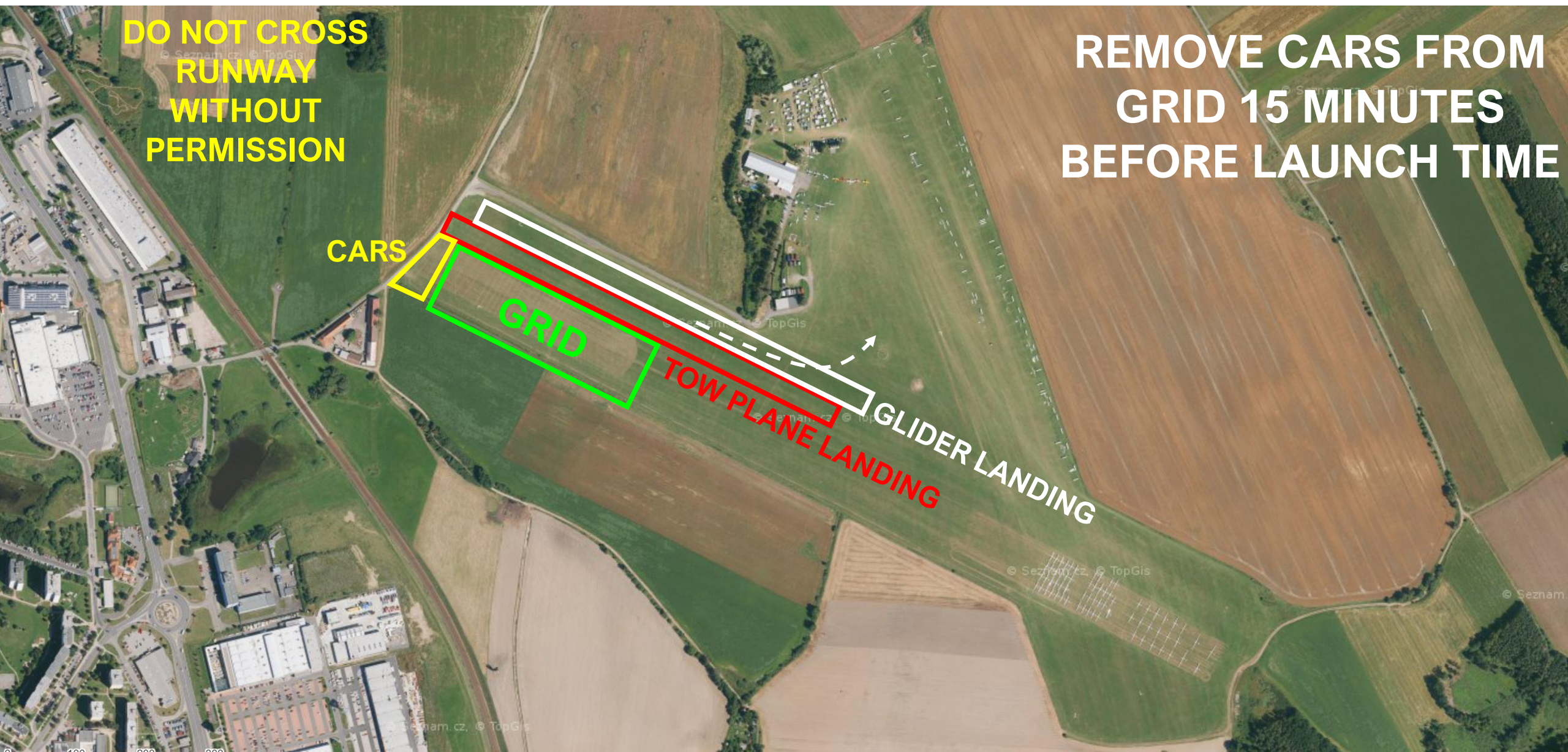
**REMOVE CARS FROM
GRID 15 MINUTES
BEFORE LAUNCH TIME**

CARS

GRID

TOW PLANE LANDING

GLIDER LANDING

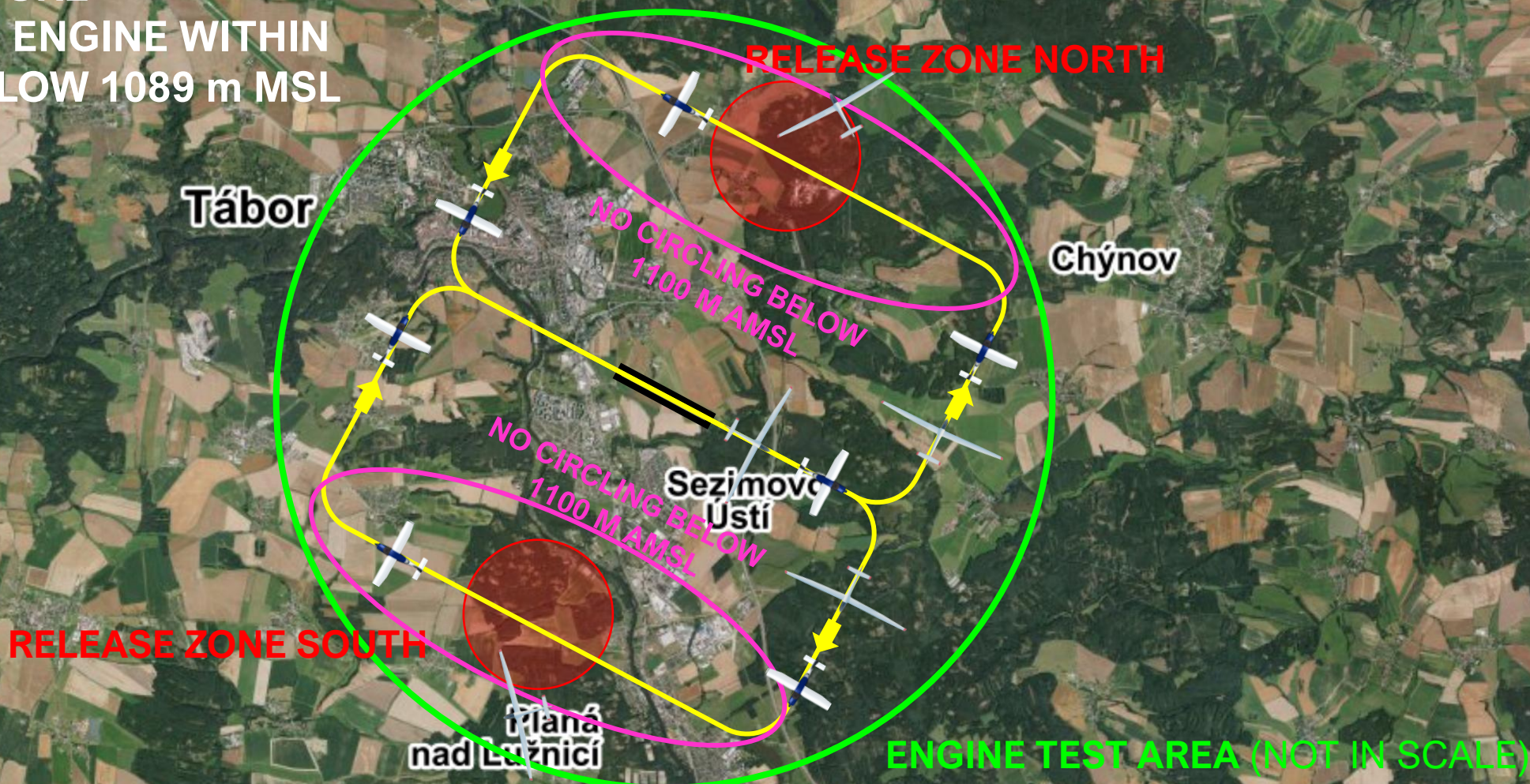


REMARKS TO YESTERDAY

- CREW MEMBERS ARE RESPONSIBLE FOR
HOOKING UP THE TOW ROPE AND RUNNING
WITH THE WING
- PILOTS, PLEASE BRAKE DURING ROPE
TENSIONING

AEROTOWS RWY 11

FOR SELF-LAUNCH FOLLOW
SAME PROCEDURE
TURN OFF THE ENGINE WITHIN
TEST AREA BELOW 1089 m MSL

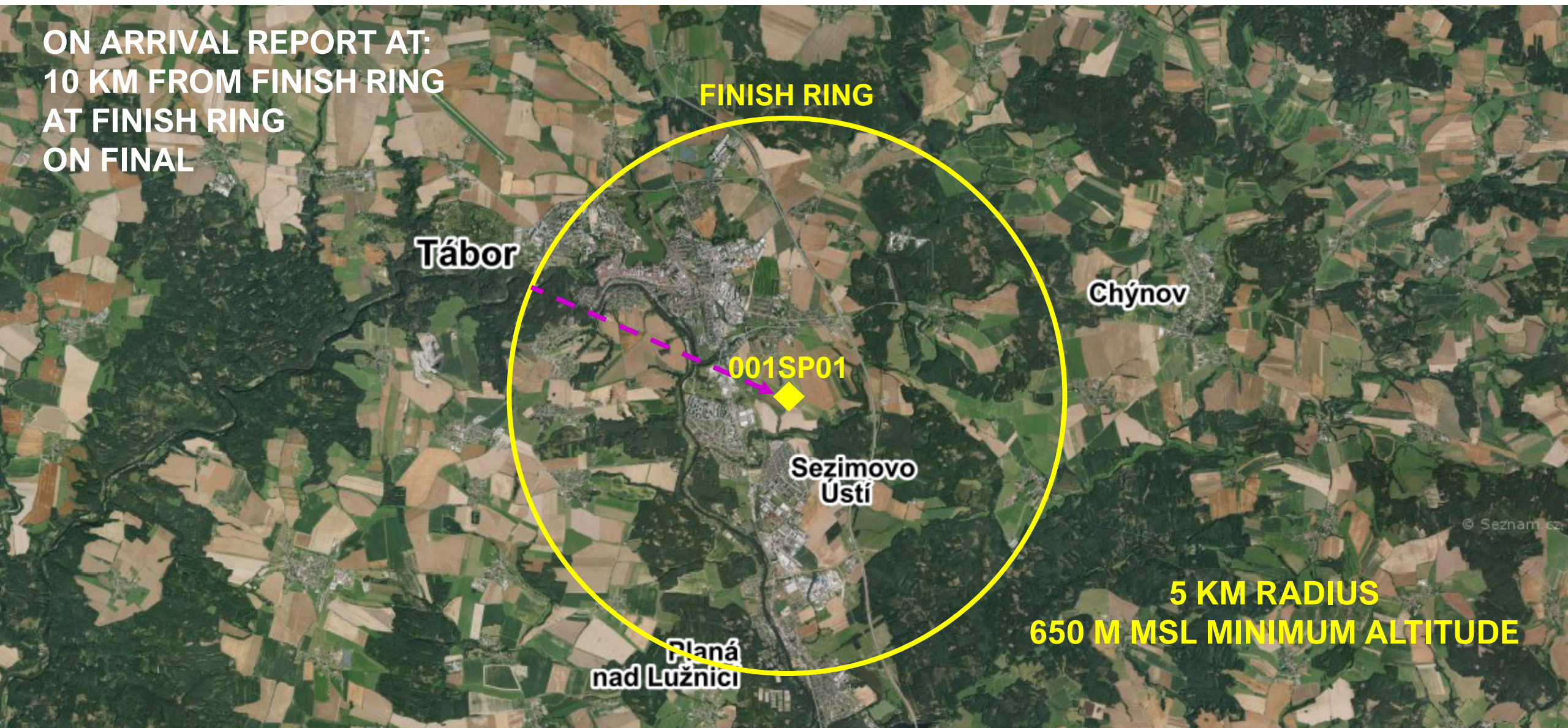


ENGINE TEST PROCEDURE

- START ENGINE WITHIN 5 MINUTES
AFTER RELEASE
- RUN ENGINE FOR MAXIMUM OF TWO
MINUTES
- REMAIN WITHIN ENGINE TEST AREA

FINISH RWY 11

ON ARRIVAL REPORT AT:
10 KM FROM FINISH RING
AT FINISH RING
ON FINAL



FINISH RING

Tábor

Chýnov

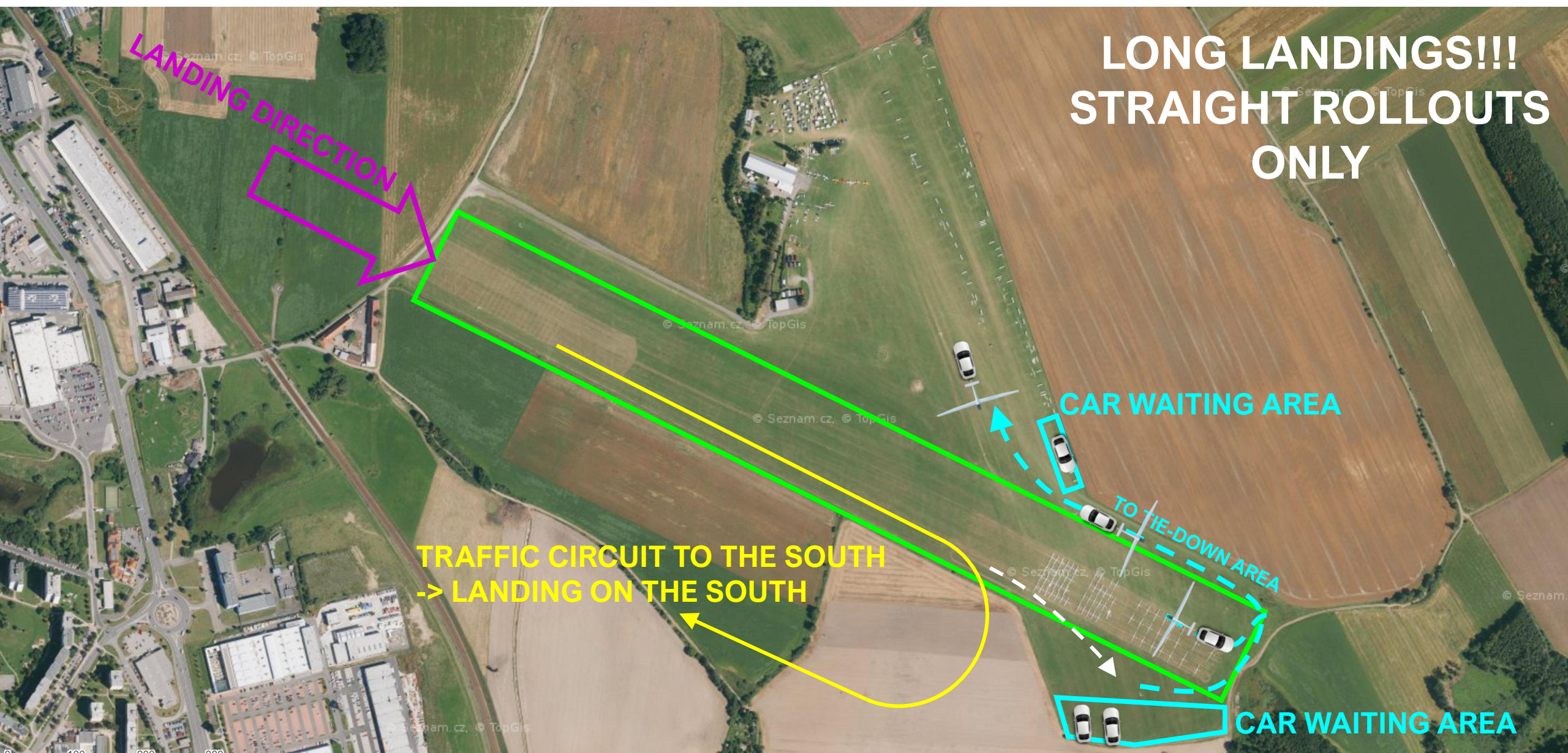
001SP01

Sezimovo
Ústí

Planá
nad Lužnicí

5 KM RADIUS
650 M MSL MINIMUM ALTITUDE

LANDING RWY 11



ENERGY CONTROL

— MAXIMUM START ALTITUDE

NOT IN USE TODAY

— MAXIMUM START GROUND SPEED

NOT IN USE TODAY

PRE-START ALTITUDE LIMIT

— PRE-START ALTITUDE LIMIT
NOT IN USE TODAY

PEV START PROCEDURE

— PEV WAIT TIME

8 MINUTES

— PEV START WINDOW

5 MINUTES

— MAXIMUM NUMBER OF STARTS: 3

START LINE OPENING

— START LINE WILL OPEN AT 12:30

IGC FILE DELIVERY

- SEND ALL FILES TO IGC@POHODA.COM
- **30 MINUTES FOR FILE DELIVERY**
- INCLUDE CN IN EMAIL SUBJECT
- **ENSURE CORRECT FILE HEADER**
- 1 SECOND FIX RATE

SAFETY

- LOOK OUT, LOOK OUT, LOOK OUT
- STAY HYDRATED
- FLY SAFE

INFORMATION FOR TODAY

- RUNWAY FOR LAUNCHES: **TBD**
- RUNWAY FOR LANDINGS: **11**
- FIRST LAUNCH: **12:00**
- FREQ: **118.140 MHz**
- TASK A IS VALID

INFORMATION FOR TODAY

- GRID INFORMATION AT **10:45**
- CLUB CLASS FROM FIRST CONE
- STD, 15M CLASS FROM SECOND CONE



Jihočeský kraj



eclipse.



Air Navigation Services
of the Czech Republic



Cred0.

SKUPINA
GW JIHOTRANS



NOBIS GROUP
WWW.AGROPANEL.CZ

ma dona
Zpracování PUR a PE pěn