



39th FAI
WORLD GLIDING
CHAMPIONSHIPS
TÁBOR I 2025

SELFBRIEFING

Version 1 – 05/05/2025

AIRFIELD INFORMATION

Location: 3km SE of Tábor (49° 23' 28" N, 14° 42' 30" E)

Elevation: 439 m

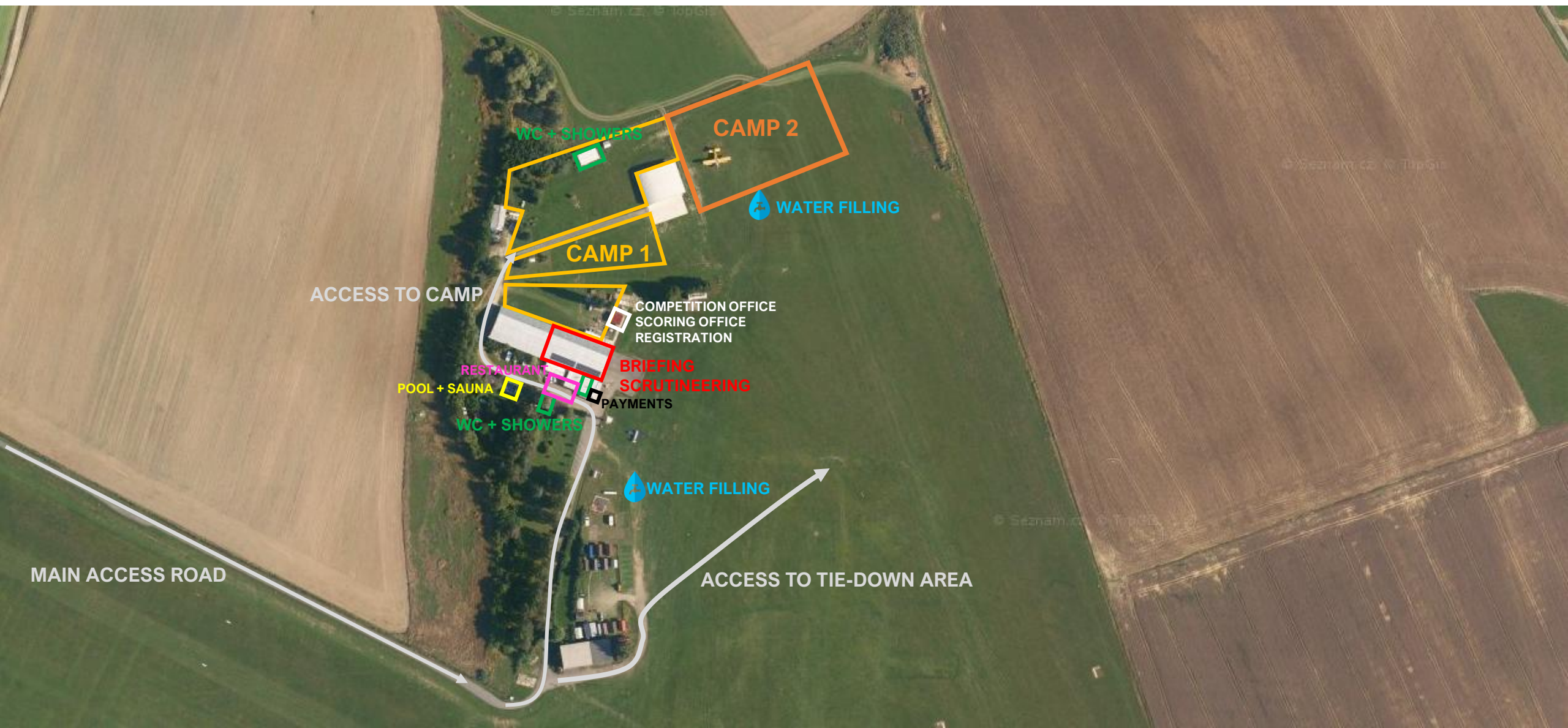
RWYs: 11/29 (grass, course: 116°/296°) and 16/34 (closed for the competition)

FREQ: Tabor Radio - 122.610 MHz

VFR Manual: https://aim.rlp.cz/vfrmanual/actual/lkta_text_en.html

AIRFIELD FACILITIES

39th FAI WGC
TÁBOR I 2025



GLIDER TIE-DOWN AREA



CONTEST SITE BOUNDARY

39th FAI WGC
TÁBOR I 2025



GRID ORDER RWY 29

39th FAI WGC
TÁBOR I 2025



**ORDER OF CLASSES MAY CHANGE
ROW NUMBERS WILL BE KEPT CONSTANT**

**CLUB CLASS
ROWS 1-9**

**STANDARD CLASS
ROWS 10-17**

**15M CLASS
ROWS 18-24**

**IF A COMPETITOR IS
ASSIGNED ROW 1,
THEY WILL REMAIN IN
ROW 1 FOR THE
ENTIRE
CHAMPIONSHIPS BUT
LOCATION OF THE
ROW WILL CHANGE
EACH DAY**

GRID RWY 29

FOLLOW MARKING ON GROUND
COME FROM THE NORTH SIDE
BUILD ROWS FROM SOUTH TO NORTH

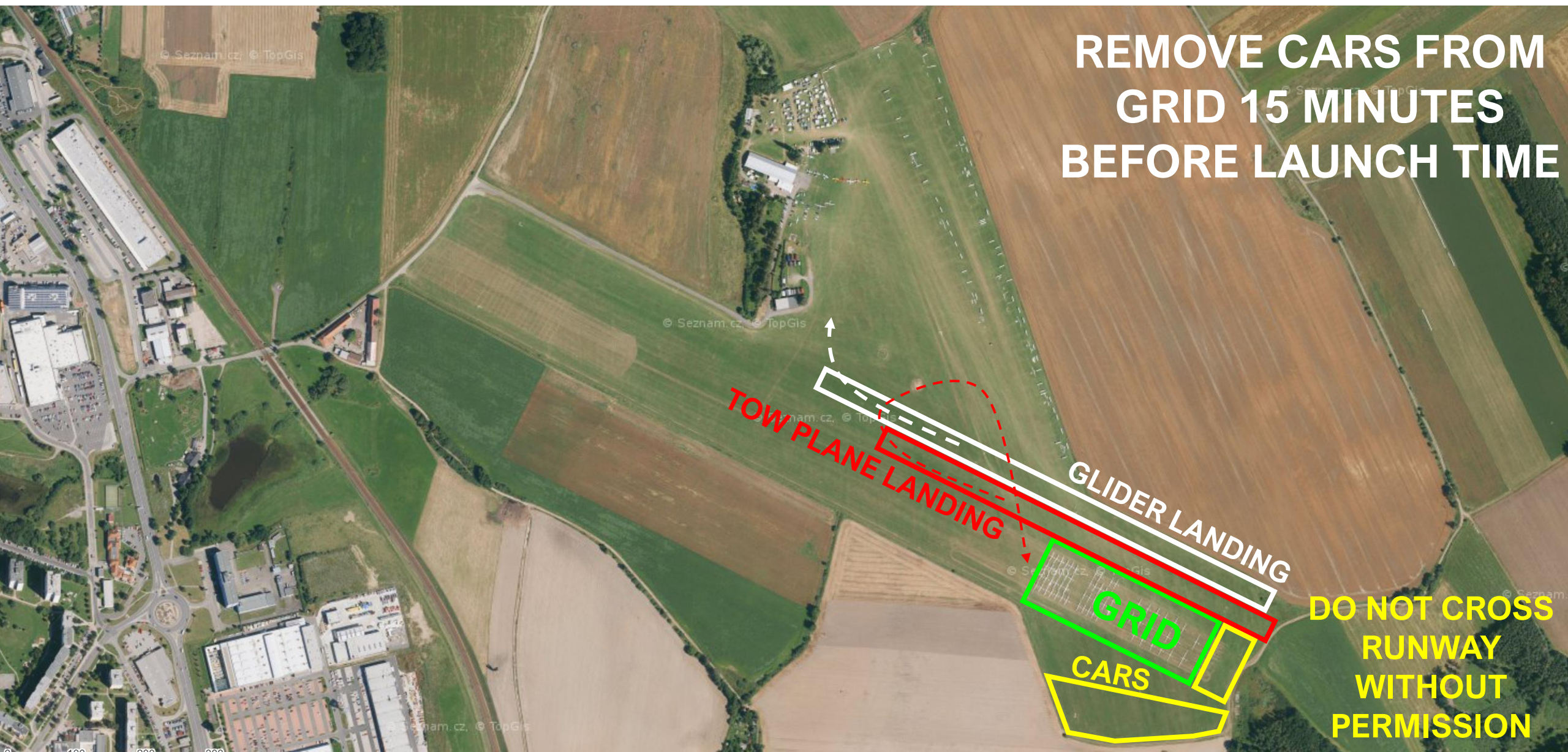


TAKE-OFF RWY 29

39th FAI WGC
TÁBOR I 2025



REMOVE CARS FROM
GRID 15 MINUTES
BEFORE LAUNCH TIME



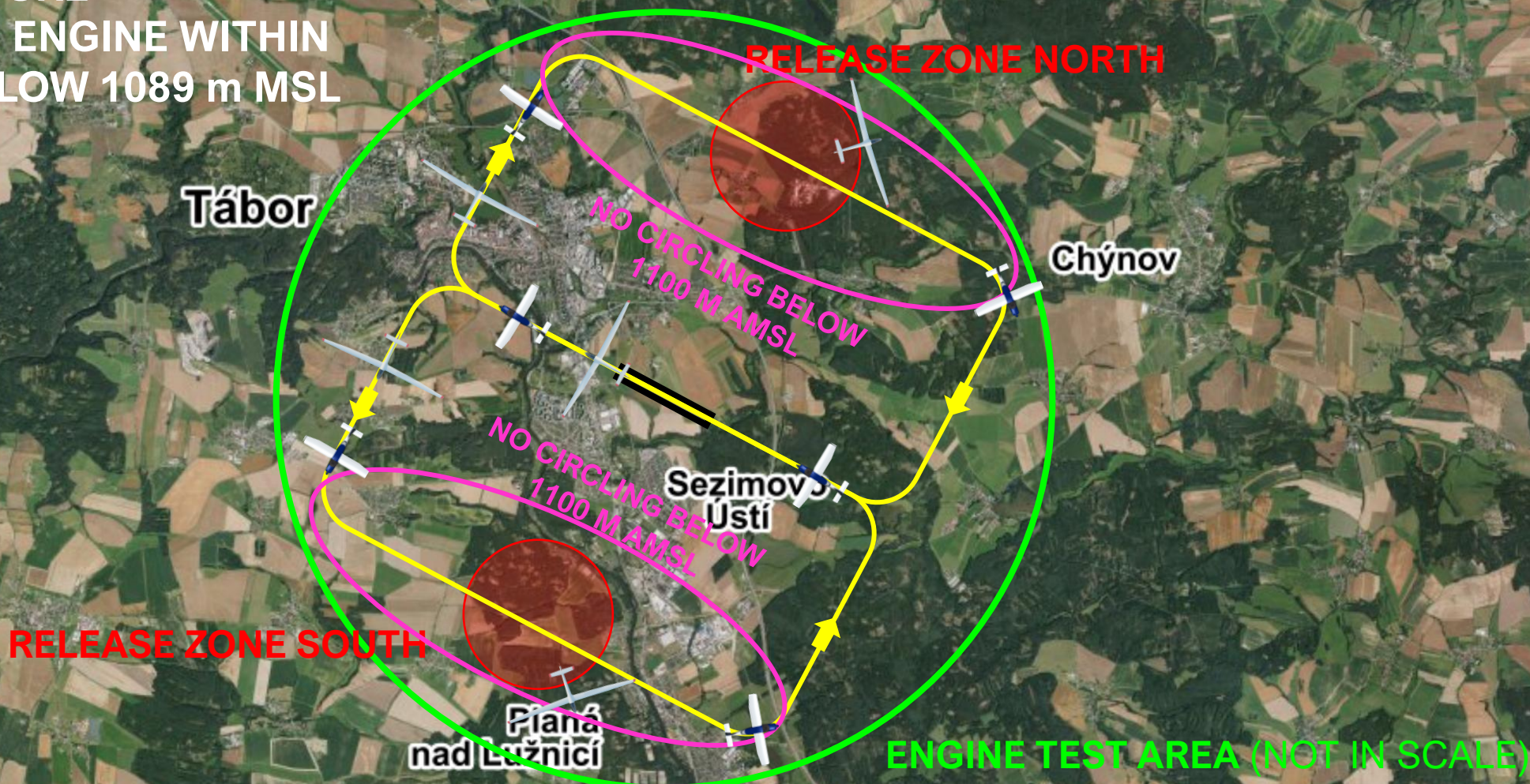
DO NOT CROSS
RUNWAY
WITHOUT
PERMISSION

AEROTOWS RWY 29

39th FAI WGC
TÁBOR I 2025



FOR SELF-LAUNCH FOLLOW
SAME PROCEDURE
TURN OFF THE ENGINE WITHIN
TEST AREA BELOW 1089 m MSL

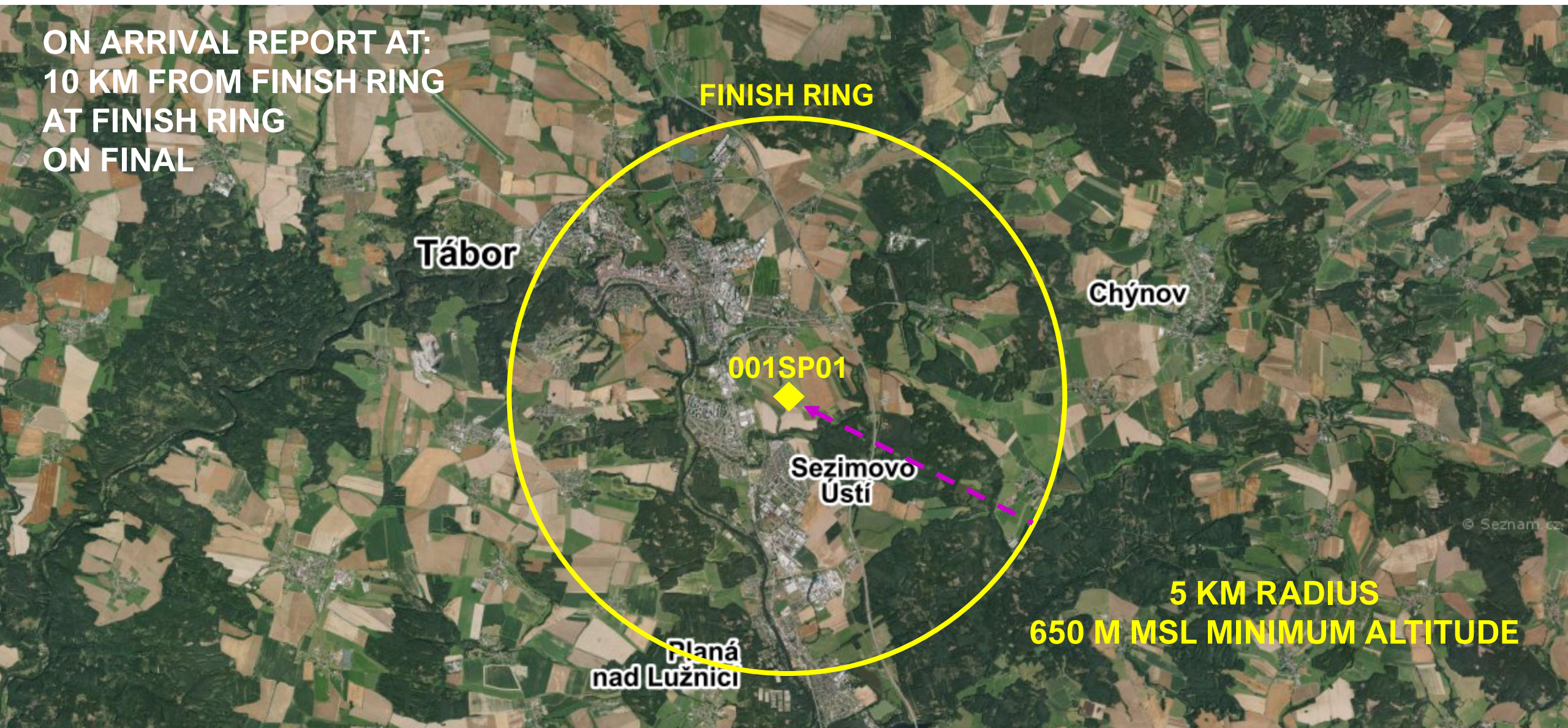


FINISH RWY 29

39th FAI WGC
TÁBOR I 2025

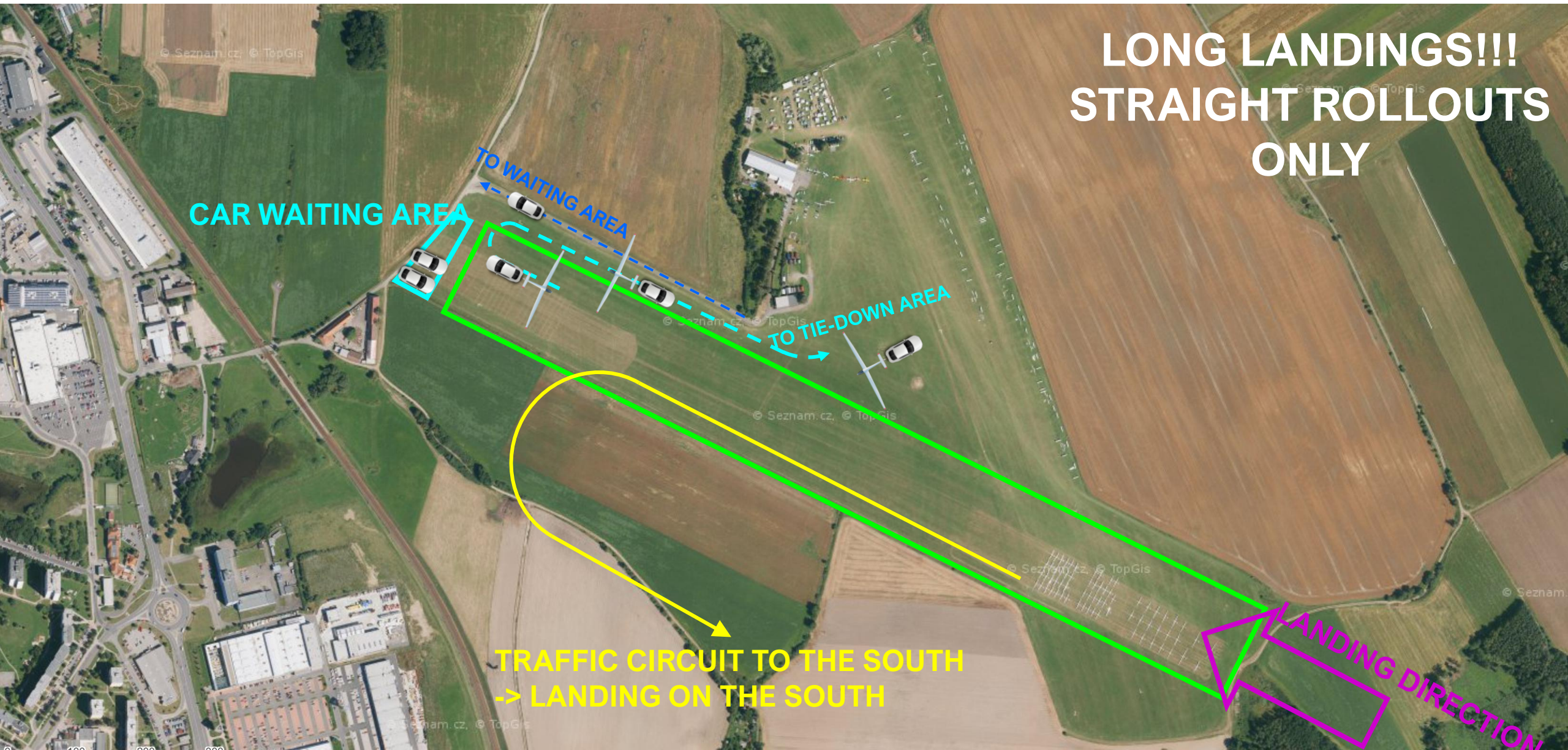


ON ARRIVAL REPORT AT:
10 KM FROM FINISH RING
AT FINISH RING
ON FINAL



5 KM RADIUS
650 M MSL MINIMUM ALTITUDE

LANDING RWY 29



**LONG LANDINGS!!!
STRAIGHT ROLLOUTS
ONLY**

CAR WAITING AREA

TO WAITING AREA

TO TIE-DOWN AREA

**TRAFFIC CIRCUIT TO THE SOUTH
-> LANDING ON THE SOUTH**

LANDING DIRECTION

GRID ORDER RWY 11

39th FAI WGC
TÁBOR I 2025



**ORDER OF CLASSES MAY CHANGE
ROW NUMBERS WILL BE KEPT CONSTANT**

**15M CLASS
ROWS 18-24**

**STANDARD CLASS
ROWS 10-17**

**CLUB CLASS
ROWS 1-9**

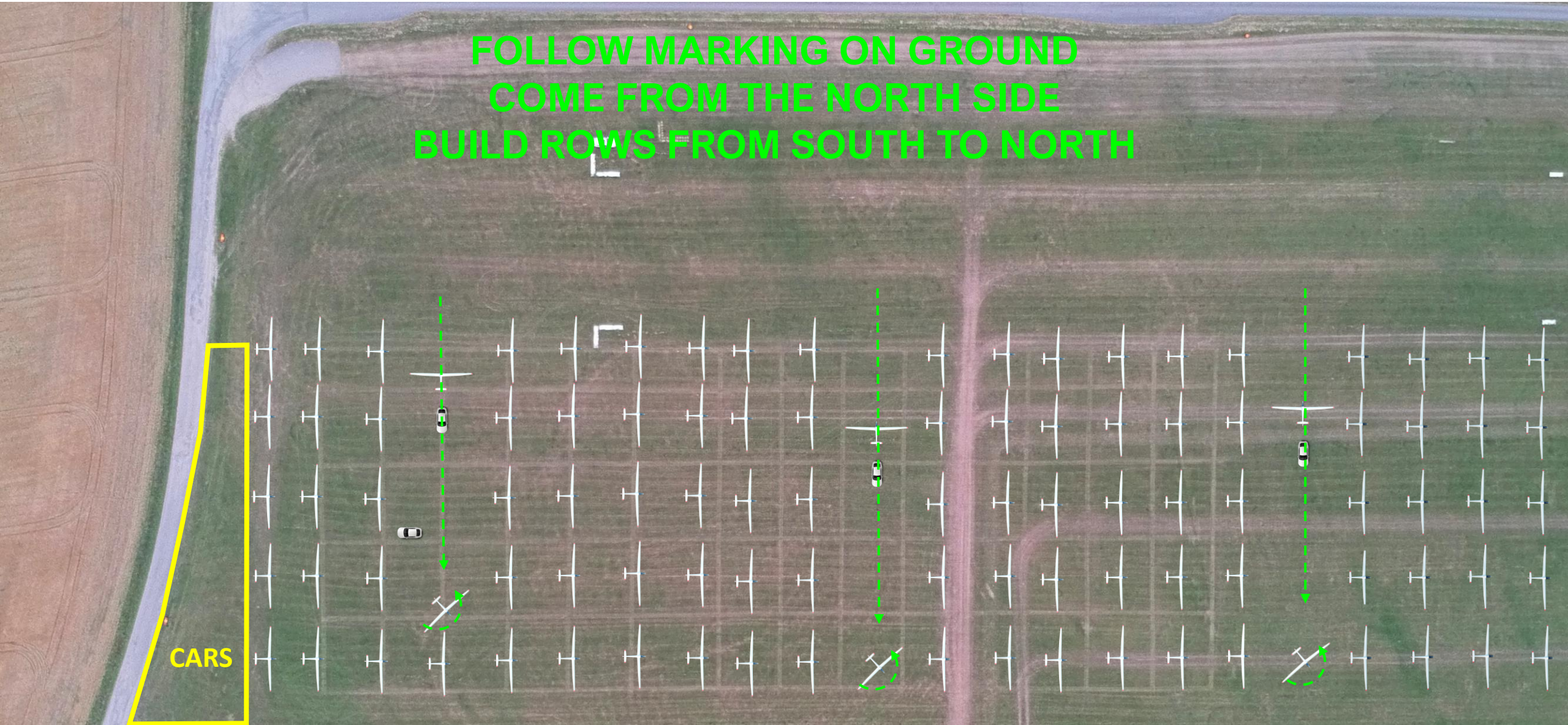
**IF A COMPETITOR IS
ASSIGNED ROW 1,
THEY WILL REMAIN IN
ROW 1 FOR THE
ENTIRE
CHAMPIONSHIPS BUT
LOCATION OF THE
ROW WILL CHANGE
EACH DAY**



GRID RWY 11

**FOLLOW MARKING ON GROUND
COME FROM THE NORTH SIDE
BUILD ROWS FROM SOUTH TO NORTH**

CARS



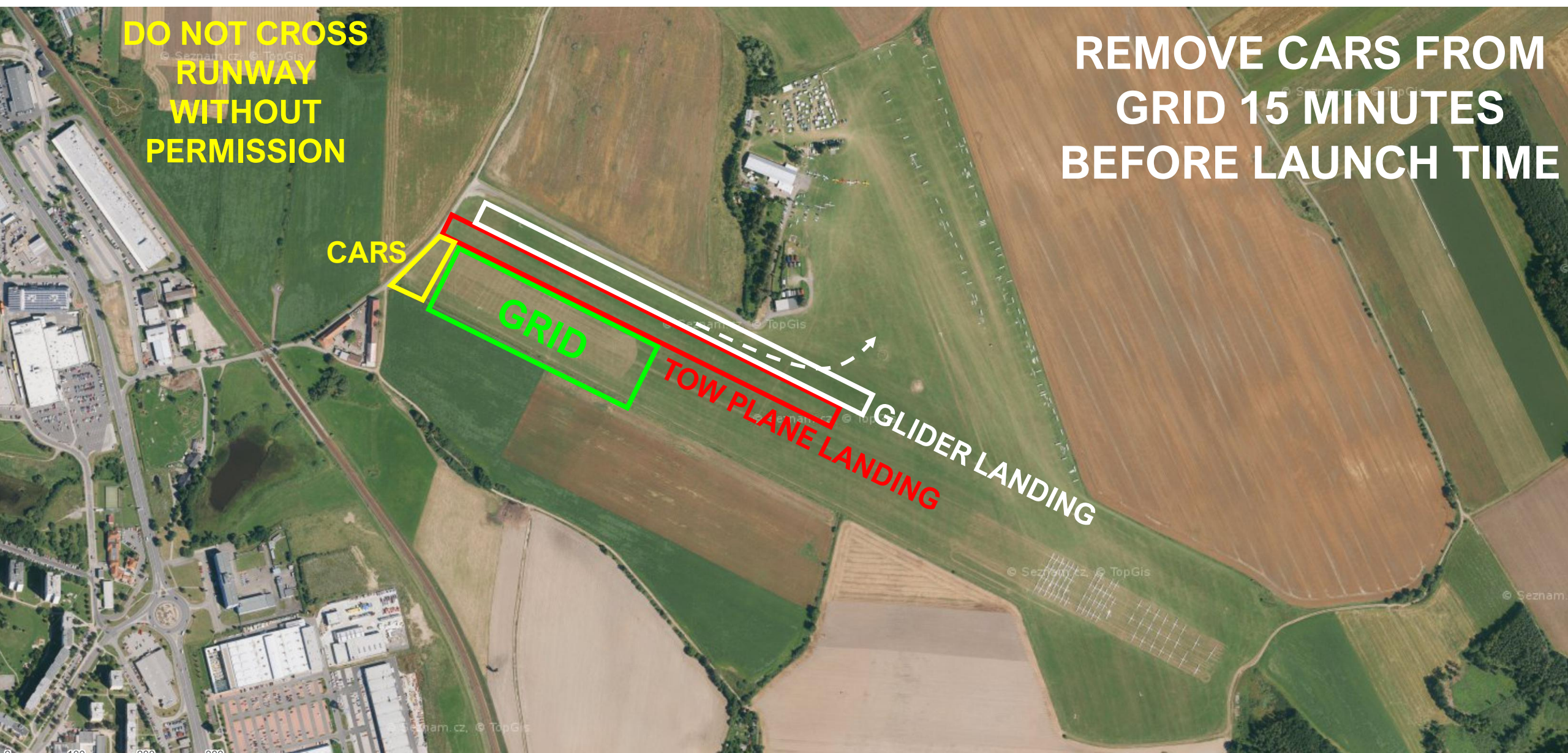
TAKE-OFF RWY 11

39th FAI WGC
TÁBOR I 2025



**DO NOT CROSS
RUNWAY
WITHOUT
PERMISSION**

**REMOVE CARS FROM
GRID 15 MINUTES
BEFORE LAUNCH TIME**

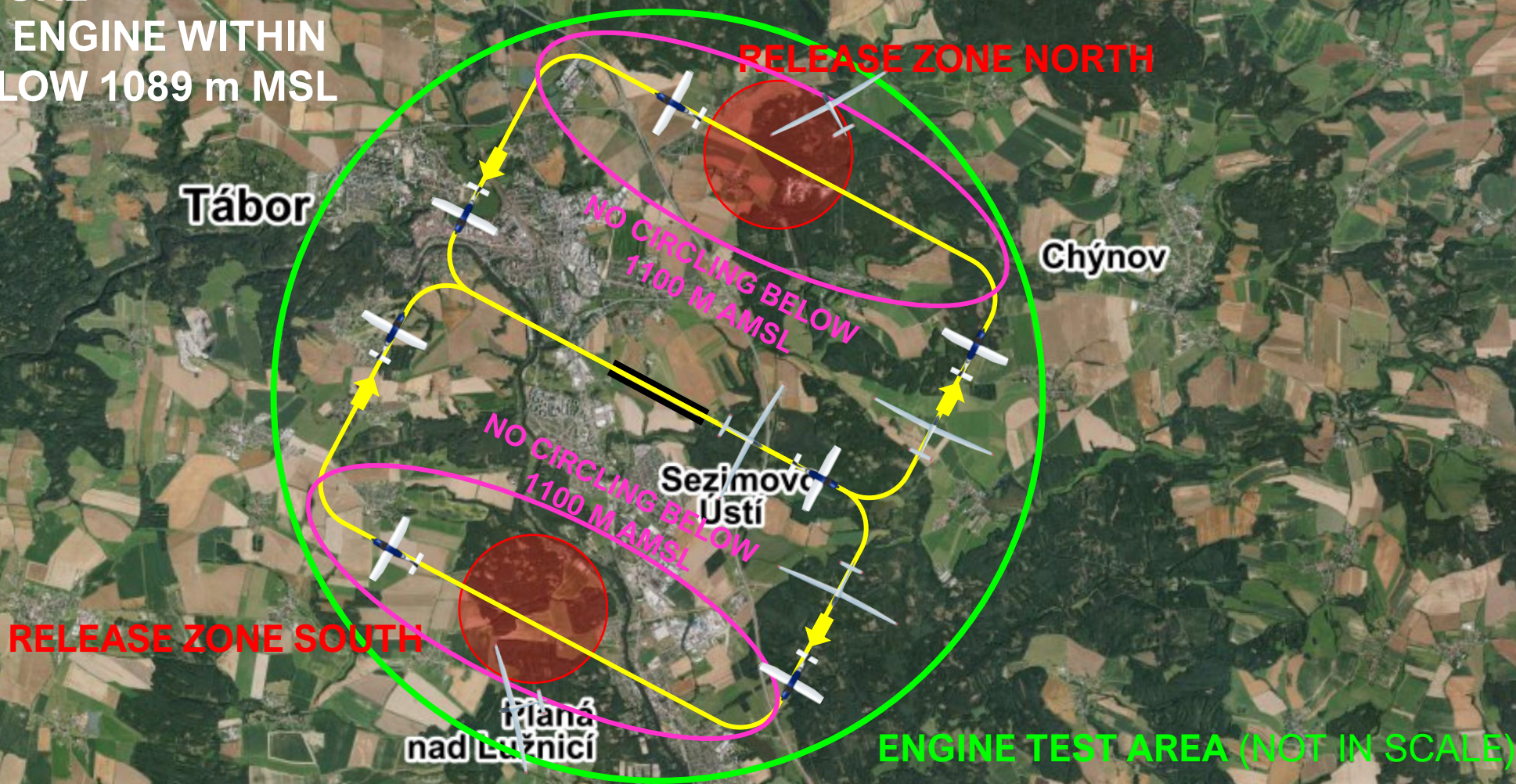


AEROTOWS RWY 11

39th FAI WGC
TÁBOR I 2025



FOR SELF-LAUNCH FOLLOW
SAME PROCEDURE
TURN OFF THE ENGINE WITHIN
TEST AREA BELOW 1089 m MSL

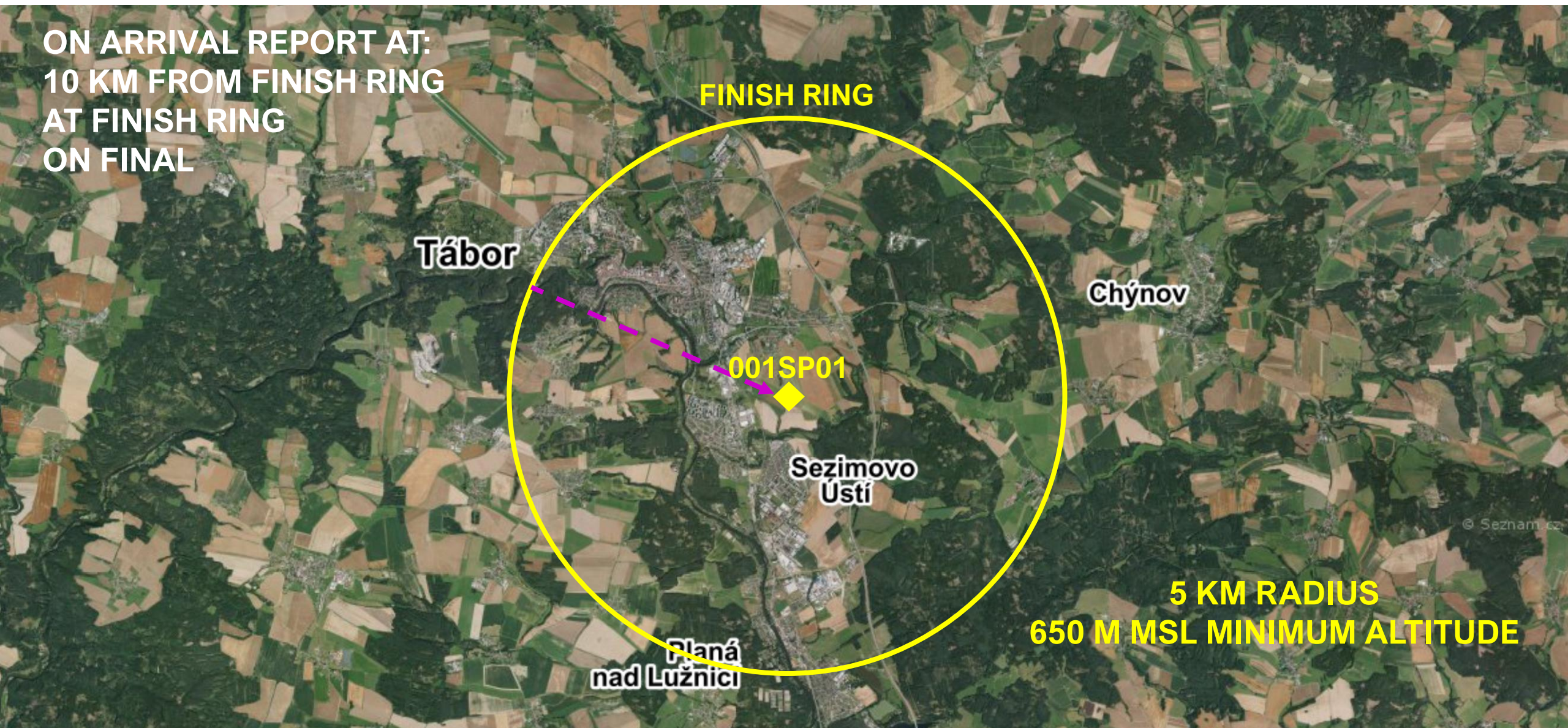


FINISH RWY 11

39th FAI WGC
TÁBOR I 2025



ON ARRIVAL REPORT AT:
10 KM FROM FINISH RING
AT FINISH RING
ON FINAL



FINISH RING

Tábor

Chýnov

001SP01

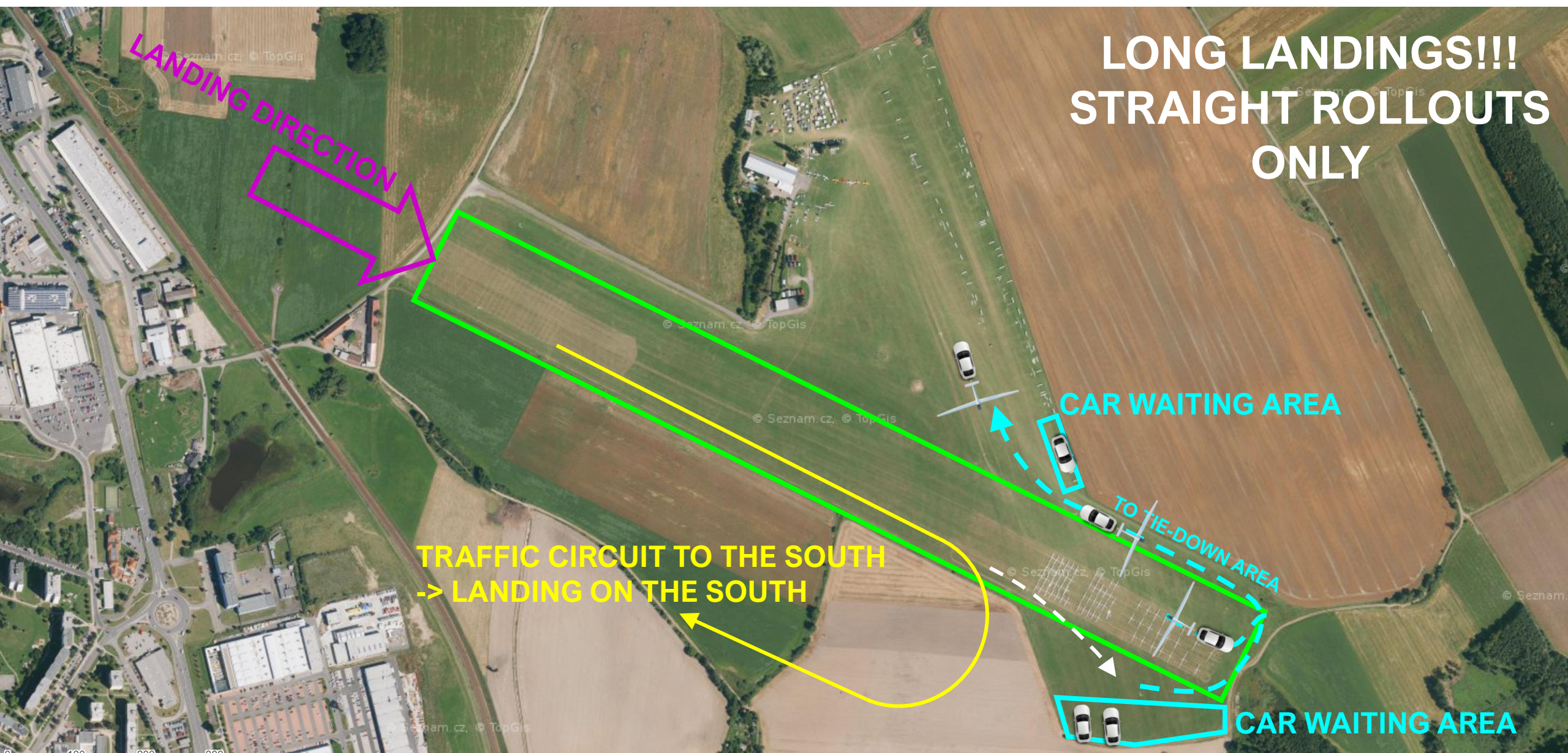
Sezimovo
Ústí

Planá
nad Lužnicí

5 KM RADIUS
650 M MSL MINIMUM ALTITUDE

LANDING RWY 11

39th FAI WGC
TÁBOR I 2025



**LONG LANDINGS!!!
STRAIGHT ROLLOUTS
ONLY**

LANDING DIRECTION

CAR WAITING AREA

**TRAFFIC CIRCUIT TO THE SOUTH
-> LANDING ON THE SOUTH**

TO TIE-DOWN AREA

CAR WAITING AREA

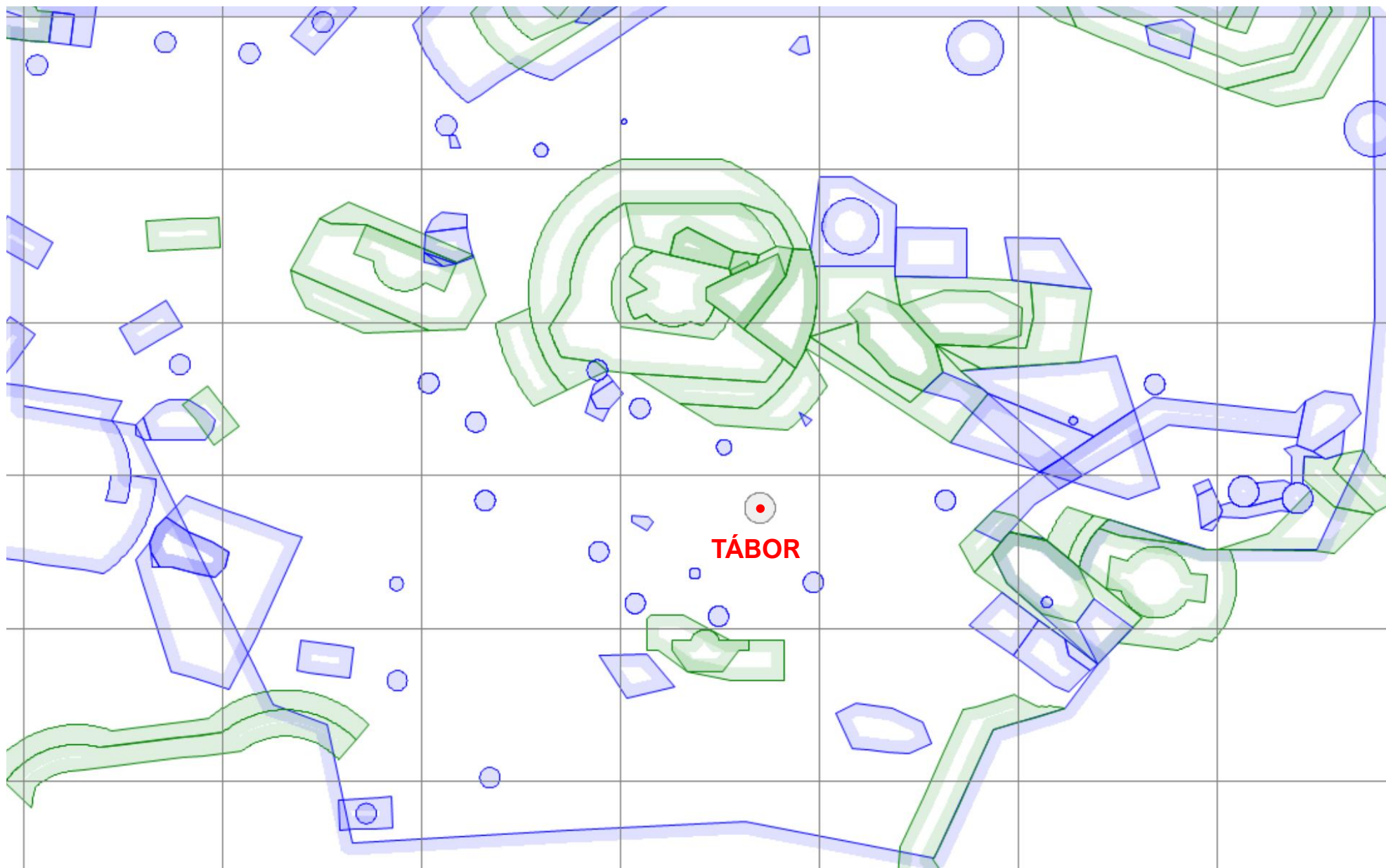
ALTITUDE LIMITS

Contest Area Altitude Limit: **FL95**

Sporting Limits Not Applied

COMPETITION AREA

39th FAI WGC
TÁBOR I 2025



MAIN INFO SUMMARY

Competition frequency – Tabor COMPETITION – **TBD**

Safety Frequency – **TBD**

RWY: 11/29

Airfield elevation: 439 m

Start line radius: 7.5 km (15 km total length)

Finish ring: 5 km radius, 650 m MSL minimum finish altitude

Contest Area Altitude Limit: FL 95